

# SCN8A Rabbit pAb

Catalog No.: A10007

## Basic Information

### Catalog No.

A10007

### Observed MW

165kDa

### Calculated MW

145kDa/220kDa/225kDa/226kDa

### Category

Primary antibody

### Applications

WB

### Cross-Reactivity

Human

## Recommended Dilutions

WB 1:200 - 1:1000

## Background

This gene encodes a member of the sodium channel alpha subunit gene family. The encoded protein forms the ion pore region of the voltage-gated sodium channel. This protein is essential for the rapid membrane depolarization that occurs during the formation of the action potential in excitable neurons. Mutations in this gene are associated with mental retardation, pancerebellar atrophy and ataxia. Alternate splicing results in multiple transcript variants.

## Immunogen Information

### Gene ID

6334

### Swiss Prot

Q9UQD0

### Immunogen

Recombinant fusion protein containing a sequence corresponding to amino acids 1350-1440 of human SCN8A (NP\_055006.1).

### Synonyms

SCN8A;BFIS5;CERIII;CIAT;EIEE13;MED;NaCh6;Nav1.6;PN4

## Contact

 | [www.abclonal.com](http://www.abclonal.com)

## Product Information

### Source

Rabbit

### Isotype

IgG

### Purification

Affinity purification

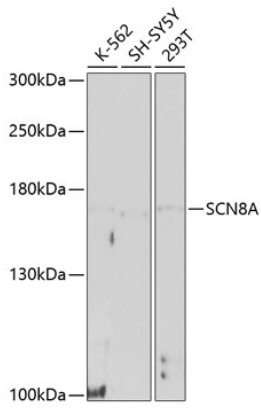
### Storage

Store at -20°C. Avoid freeze / thaw cycles.

Buffer: PBS with 0.02% sodium azide, 50% glycerol, pH7.3.

## Validation Data

---



Western blot analysis of extracts of various cell lines, using SCN8A antibody (A10007) at 1:1000 dilution.

Secondary antibody: HRP Goat Anti-Rabbit IgG (H+L) (AS014) at 1:10000 dilution.

Lysates/proteins: 25ug per lane.

Blocking buffer: 3% nonfat dry milk in TBST.

Detection: ECL Basic Kit (RM00020).

Exposure time: 90s.