

HSP90B1 Rabbit pAb

Catalog No.: A0989 **2 Publications**

Basic Information

Catalog No.

A0989

Observed MW

110kDa

Calculated MW

92kDa

Category

Primary antibody

Applications

WB, IHC, IF

Cross-Reactivity

Human, Mouse, Rat

Recommended Dilutions

WB	1:500 - 1:2000
IHC	1:50 - 1:100
IF	1:50 - 1:100

Contact

 | www.abclonal.com

Background

This gene encodes a member of a family of adenosine triphosphate(ATP)-metabolizing molecular chaperones with roles in stabilizing and folding other proteins. The encoded protein is localized to melanosomes and the endoplasmic reticulum. Expression of this protein is associated with a variety of pathogenic states, including tumor formation. There is a microRNA gene located within the 5' exon of this gene. There are pseudogenes for this gene on chromosomes 1 and 15.

Immunogen Information

Gene ID	Swiss Prot
7184	P14625

Immunogen

A synthetic peptide corresponding to a sequence within amino acids 550-650 of human HSP90B1 (NP_003290.1).

Synonyms

HSP90B1;ECGP;GP96;GRP94;HEL-S-125m;HEL35;TRA1

Product Information

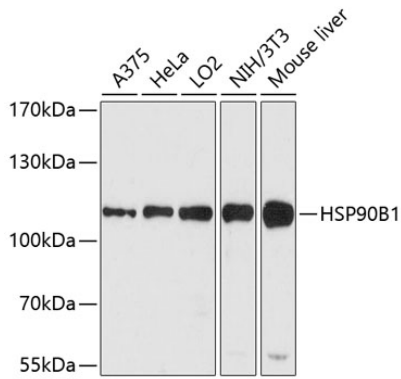
Source	Isotype	Purification
Rabbit	IgG	Affinity purification

Storage

Store at -20°C. Avoid freeze / thaw cycles.

Buffer: PBS with 0.02% sodium azide,50% glycerol,pH7.3.

Validation Data



Western blot analysis of extracts of various cell lines, using HSP90B1 antibody (A0989) at 1:1000 dilution.

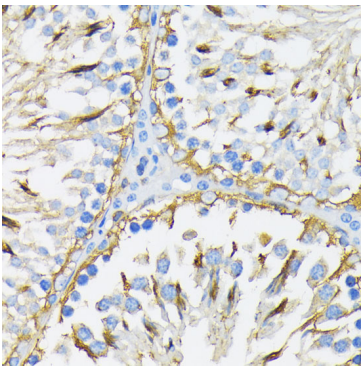
Secondary antibody: HRP Goat Anti-Rabbit IgG (H+L) (AS014) at 1:10000 dilution.

Lysates/proteins: 25ug per lane.

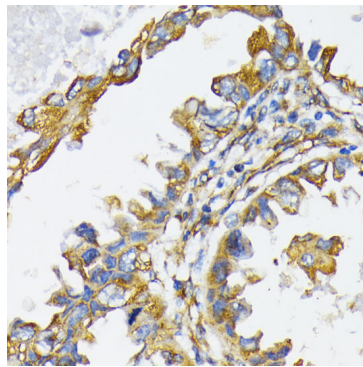
Blocking buffer: 3% nonfat dry milk in TBST.

Detection: ECL Enhanced Kit (RM00021).

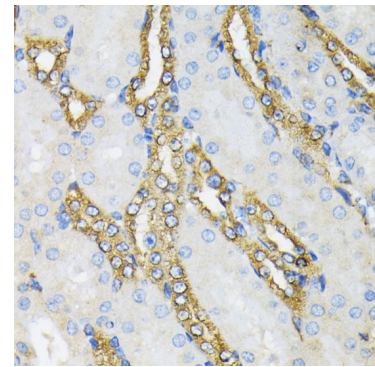
Exposure time: 90s.



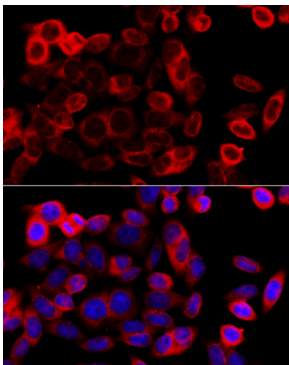
Immunohistochemistry of paraffin-embedded rat testis using HSP90B1 antibody (A0989) at dilution of 1:200 (40x lens).



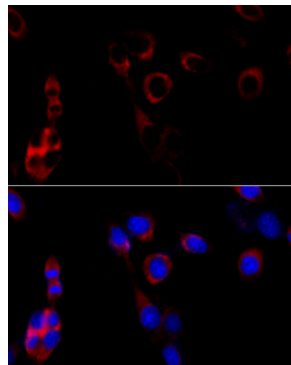
Immunohistochemistry of paraffin-embedded human lung cancer using HSP90B1 antibody (A0989) at dilution of 1:200 (40x lens).



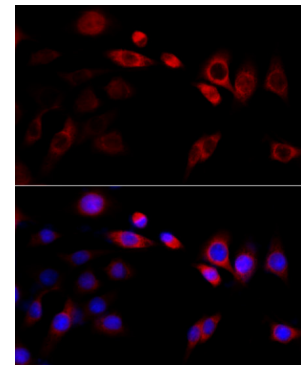
Immunohistochemistry of paraffin-embedded mouse kidney using HSP90B1 antibody (A0989) at dilution of 1:200 (40x lens).



Immunofluorescence analysis of HeLa cells using HSP90B1 antibody (A0989) at dilution of 1:100 (40x lens). Blue: DAPI for nuclear staining.



Immunofluorescence analysis of NIH/3T3 cells using HSP90B1 antibody (A0989) at dilution of 1:100 (40x lens). Blue: DAPI for nuclear staining.



Immunofluorescence analysis of PC-12 cells using HSP90B1 antibody (A0989) at dilution of 1:100 (40x lens). Blue: DAPI for nuclear staining.