

# CEACAM5 Rabbit pAb

Catalog No.: A0970 **1 Publications**

## Basic Information

### Catalog No.

A0970

### Observed MW

170kDa

### Calculated MW

76kDa

### Category

Primary antibody

### Applications

WB

### Cross-Reactivity

Human, Mouse

## Recommended Dilutions

**WB** 1:500 - 1:2000

## Background

This gene encodes a cell surface glycoprotein that represents the founding member of the carcinoembryonic antigen (CEA) family of proteins. The encoded protein is used as a clinical biomarker for gastrointestinal cancers and may promote tumor development through its role as a cell adhesion molecule. Additionally, the encoded protein may regulate differentiation, apoptosis, and cell polarity. This gene is present in a CEA family gene cluster on chromosome 19. Alternative splicing results in multiple transcript variants.

## Immunogen Information

### Gene ID

1048

### Swiss Prot

P06731

### Immunogen

Recombinant protein of human CEACAM5

### Synonyms

CEACAM5;CD66e;CEA

## Contact

 | [www.abclonal.com](http://www.abclonal.com)

## Product Information

### Source

Rabbit

### Isotype

IgG

### Purification

Affinity purification

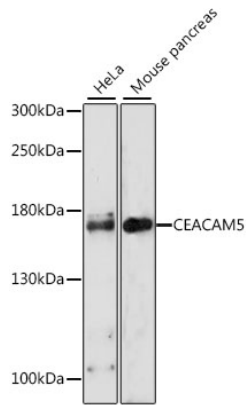
### Storage

Store at -20°C. Avoid freeze / thaw cycles.

Buffer: PBS with 0.02% sodium azide,50% glycerol,pH7.3.

## Validation Data

---



Western blot analysis of extracts of various cell lines, using CEACAM5 antibody (A0970) at 1:1000 dilution.

Secondary antibody: HRP Goat Anti-Rabbit IgG (H+L) (AS014) at 1:10000 dilution.

Lysates/proteins: 25ug per lane.

Blocking buffer: 3% nonfat dry milk in TBST.

Detection: ECL Enhanced Kit (RM00021).

Exposure time: 180s.