

[KO Validated] PARP1 Rabbit pAb

Catalog No.: A0942 **KO Validated** **15 Publications**

Basic Information

Catalog No.

A0942

Observed MW

89KDa/113KDa

Calculated MW

113kDa

Category

Primary antibody

Applications

WB, IHC, IF, IP


Cross-Reactivity

Human, Mouse, Rat

Recommended Dilutions

WB	1:1000 - 1:3000
IHC	1:50 - 1:200
IF	1:50 - 1:200
IP	1:50 - 1:200

Contact

 | www.abclonal.com

Background

This gene encodes a chromatin-associated enzyme, poly(ADP-ribosyl)transferase, which modifies various nuclear proteins by poly(ADP-ribosyl)ation. The modification is dependent on DNA and is involved in the regulation of various important cellular processes such as differentiation, proliferation, and tumor transformation and also in the regulation of the molecular events involved in the recovery of cell from DNA damage. In addition, this enzyme may be the site of mutation in Fanconi anemia, and may participate in the pathophysiology of type I diabetes.

Immunogen Information

Gene ID	Swiss Prot
142	P09874

Immunogen

Recombinant fusion protein containing a sequence corresponding to amino acids 81-390 of human PARP1 (NP_001609.2).

Synonyms

ADPRT;ADPRT 1;ADPRT1;ARTD1;PARP;PARP-1;PPOL;pADPRT-1;PARP1;Cleaved PARP;PARP1

Product Information

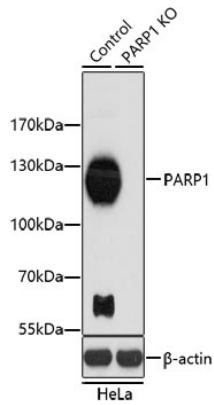
Source	Isotype	Purification
Rabbit	IgG	Affinity purification

Storage

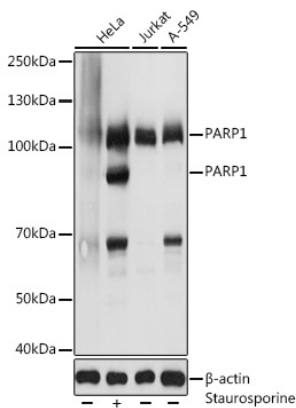
Store at -20°C. Avoid freeze / thaw cycles.

Buffer: PBS with 0.02% sodium azide,50% glycerol,pH7.3.

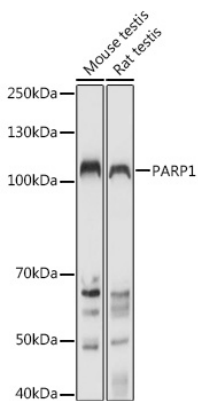
Validation Data



Western blot analysis of extracts from normal (control) and PARP1 knockout (KO) HeLa cells, using PARP1 antibody (A0942) at 1:1000 dilution.
Secondary antibody: HRP Goat Anti-Rabbit IgG (H+L) (AS014) at 1:10000 dilution.
Lysates/proteins: 25ug per lane.
Blocking buffer: 3% nonfat dry milk in TBST.
Detection: ECL Basic Kit (RM00020).
Exposure time: 90s.

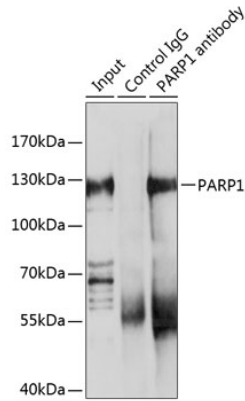


Western blot analysis of extracts of various cell lines, using PARP1 antibody (A0942) at 1:3000 dilution. HeLa cells were treated by staurosporine (1 uM) for 3 hour.
Secondary antibody: HRP Goat Anti-Rabbit IgG (H+L) (AS014) at 1:10000 dilution.
Lysates/proteins: 25ug per lane.
Blocking buffer: 3% nonfat dry milk in TBST.
Detection: ECL Basic Kit (RM00020).
Exposure time: 1s.

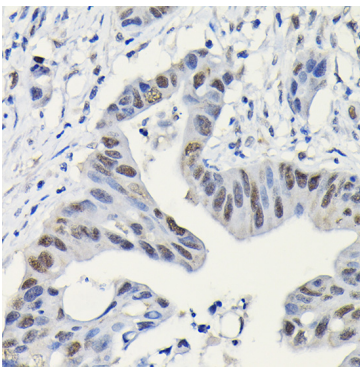


Western blot analysis of extracts of various cell lines, using PARP1 antibody (A0942) at 1:3000 dilution.
Secondary antibody: HRP Goat Anti-Rabbit IgG (H+L) (AS014) at 1:10000 dilution.
Lysates/proteins: 25ug per lane.
Blocking buffer: 3% nonfat dry milk in TBST.
Detection: ECL Basic Kit (RM00020).
Exposure time: 3s.

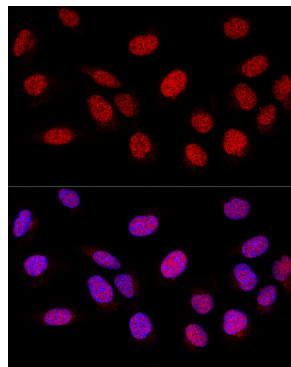
Validation Data



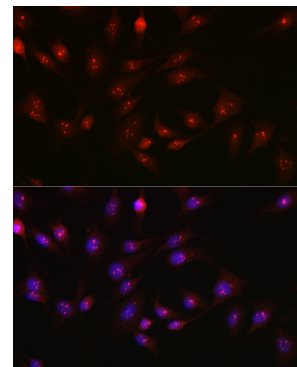
Immunoprecipitation analysis of 200ug extracts of A-549 cells using 3ug PARP1 antibody (A0942). Western blot was performed from the immunoprecipitate using PARP1 antibody (A0942) at a dilution of 1:1000.



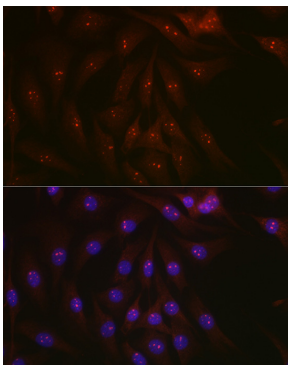
Immunohistochemistry of paraffin-embedded human colon carcinoma using [KO Validated] PARP1 Rabbit pAb (A0942) at dilution of 1:200 (40x lens).



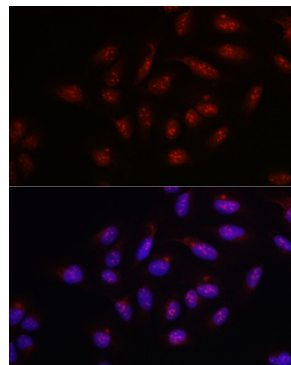
Confocal immunofluorescence analysis of U-2 OS cells using PARP1 Polyclonal Antibody (A0942) at dilution of 1:200. Blue: DAPI for nuclear staining.



Immunofluorescence analysis of C6 cells using [KO Validated] PARP1 Rabbit pAb (A0942) at dilution of 1:100 (40x lens). Blue: DAPI for nuclear staining.



Immunofluorescence analysis of NIH-3T3 cells using [KO Validated] PARP1 Rabbit pAb (A0942) at dilution of 1:100 (40x lens). Blue: DAPI for nuclear staining.



Immunofluorescence analysis of U-2 OS cells using [KO Validated] PARP1 Rabbit pAb (A0942) at dilution of 1:100 (40x lens). Blue: DAPI for nuclear staining.