

NOTCH3 Rabbit pAb

Catalog No.: A0929

Basic Information

Catalog No.

A0929

Observed MW

Refer to figures

Calculated MW

243kDa

Category

Primary antibody

Applications

WB, IF

Cross-Reactivity

Mouse, Rat

Recommended Dilutions

WB	1:500 - 1:2000
IF	1:50 - 1:200

Contact

 | www.abclonal.com

Background

This gene encodes the third discovered human homologue of the Drosophila melanogaster type I membrane protein notch. In Drosophila, notch interaction with its cell-bound ligands (delta, serrate) establishes an intercellular signalling pathway that plays a key role in neural development. Homologues of the notch-ligands have also been identified in human, but precise interactions between these ligands and the human notch homologues remains to be determined. Mutations in NOTCH3 have been identified as the underlying cause of cerebral autosomal dominant arteriopathy with subcortical infarcts and leukoencephalopathy (CADASIL).

Immunogen Information

Gene ID	Swiss Prot
4854	Q9UM47

Immunogen

Recombinant fusion protein containing a sequence corresponding to amino acids 751-850 of human NOTCH3 (NP_000426.2).

Synonyms

NOTCH3;CADASIL;CADASIL1;CASIL;IMF2;LMNS;notch 3

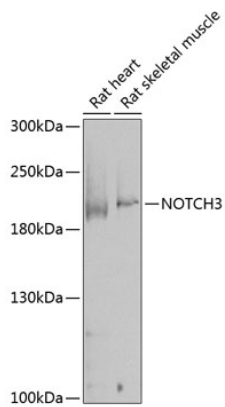
Product Information

Source	Isotype	Purification
Rabbit	IgG	Affinity purification

Storage

Store at -20°C. Avoid freeze / thaw cycles.
Buffer: PBS with 0.02% sodium azide, 50% glycerol, pH7.3.

Validation Data



Western blot analysis of extracts of various cell lines, using NOTCH3 antibody (A0929) at 1:1000 dilution.

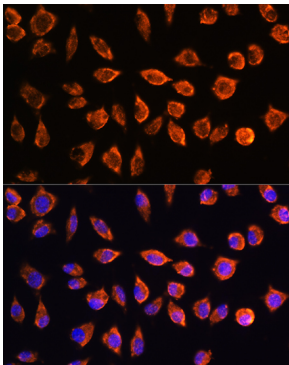
Secondary antibody: HRP Goat Anti-Rabbit IgG (H+L) (AS014) at 1:10000 dilution.

Lysates/proteins: 25ug per lane.

Blocking buffer: 3% nonfat dry milk in TBST.

Detection: ECL Enhanced Kit (RM00021).

Exposure time: 15s.



Immunofluorescence analysis of L929 cells using NOTCH3 Rabbit pAb (A0929) at dilution of 1:100. Blue: DAPI for nuclear staining.