

HES1 Rabbit mAb

Catalog No.: A0925 **Recombinant** **1 Publications**

Basic Information

Catalog No.

A0925

Observed MW

30KDa

Calculated MW

30kDa

Category

Primary antibody

Applications

WB, IHC


Cross-Reactivity

Mouse, Rat

Recommended Dilutions

WB	1:500 - 1:2000
IHC	1:50 - 1:200

Contact

 | www.abclonal.com

Background

This protein belongs to the basic helix-loop-helix family of transcription factors. It is a transcriptional repressor of genes that require a bHLH protein for their transcription. The protein has a particular type of basic domain that contains a helix interrupting protein that binds to the N-box rather than the canonical E-box. [provided by RefSeq, Jul 2008]

Immunogen Information

Gene ID	Swiss Prot
3280	Q14469

Immunogen

A synthesized peptide derived from human HES1

Synonyms

HES-1; HHL; HRY; bHLHb39

Product Information

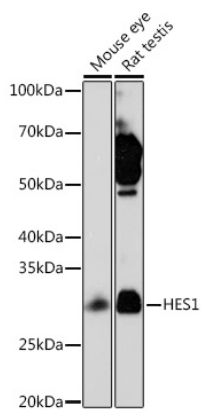
Source	Isotype	Purification
Rabbit	IgG	Affinity purification

Storage

Store at -20°C. Avoid freeze / thaw cycles.

Buffer: PBS with 0.02% sodium azide, 0.05% BSA, 50% glycerol, pH7.3.

Validation Data



Western blot analysis of extracts of various cell lines, using HES1 Rabbit mAb (A0925) at 1 : 1000 dilution.

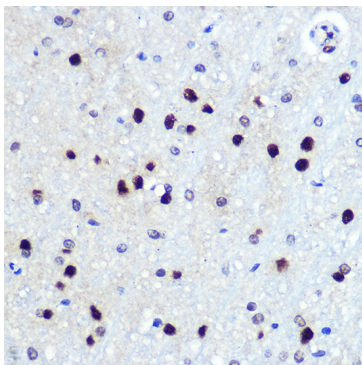
Secondary antibody: HRP Goat Anti-Rabbit IgG (H+L) (AS014) at 1:10000 dilution.

Lysates/proteins: 25ug per lane.

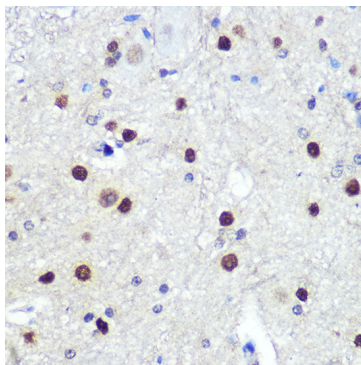
Blocking buffer: 3% nonfat dry milk in TBST.

Detection: ECL Basic Kit (RM00020).

Exposure time: 3min.



Immunohistochemistry of paraffin-embedded rat brain using HES1 Rabbit mAb (A0925) at dilution of 1:100 (40x lens).



Immunohistochemistry of paraffin-embedded mouse spinal cord using HES1 Rabbit mAb (A0925) at dilution of 1:100 (40x lens).