

# CDH3 Rabbit pAb

Catalog No.: A0915

## Basic Information

---

**Observed MW**

120kDa

**Calculated MW**

91kDa

**Category**

Primary antibody

**Applications**

WB,FC

**Cross-Reactivity**

Human

## Background

---

This gene encodes a classical cadherin of the cadherin superfamily. Alternative splicing results in multiple transcript variants, at least one of which encodes a preproprotein that is proteolytically processed to generate the mature glycoprotein. This calcium-dependent cell-cell adhesion protein is comprised of five extracellular cadherin repeats, a transmembrane region and a highly conserved cytoplasmic tail. This gene is located in a gene cluster in a region on the long arm of chromosome 16 that is involved in loss of heterozygosity events in breast and prostate cancer. In addition, aberrant expression of this protein is observed in cervical adenocarcinomas. Mutations in this gene are associated with hypotrichosis with juvenile macular dystrophy and ectodermal dysplasia, ectrodactyly, and macular dystrophy syndrome (EEMS).

## Recommended Dilutions

---

<b>WB</b>	1:500 - 1:2000
<b>FC</b>	1:20 - 1:50

## Immunogen Information

---

**Gene ID**

1001

**Swiss Prot**

P22223

**Immunogen**

A synthetic peptide of human CDH3

**Synonyms**

CDHP; HJMD; PCAD; CDH3

## Contact

---

 | [www.abclonal.com](http://www.abclonal.com)

## Product Information

---

**Source**

Rabbit

**Isotype**

IgG

**Purification**

Affinity purification

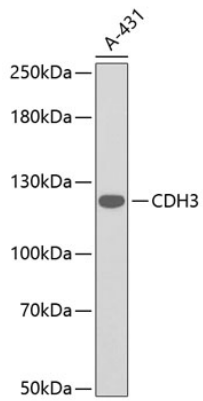
**Storage**

Store at 4°C. Avoid freeze / thaw cycles.

Buffer: PBS with 0.02% sodium azide,pH7.3.

## Validation Data

---



Western blot analysis of extracts of A-431 cells, using CDH3 antibody (A0915).  
Secondary antibody: HRP Goat Anti-Rabbit IgG (H+L) (AS014) at 1:10000 dilution.  
Lysates/proteins: 25µg per lane.  
Blocking buffer: 3% nonfat dry milk in TBST.