

LRRK2 Rabbit pAb

Catalog No.: A0859

Basic Information

Catalog No.

A0859

Observed MW

Refer to Figures

Calculated MW

286kDa

Category

Primary antibody

Applications

WB, IF

Cross-Reactivity

Human

Recommended Dilutions

WB	1:500 - 1:2000
IF	1:50 - 1:200

Contact

 | www.abclonal.com

Background

This gene is a member of the leucine-rich repeat kinase family and encodes a protein with an ankryin repeat region, a leucine-rich repeat (LRR) domain, a kinase domain, a DFG-like motif, a RAS domain, a GTPase domain, a MLK-like domain, and a WD40 domain. The protein is present largely in the cytoplasm but also associates with the mitochondrial outer membrane. Mutations in this gene have been associated with Parkinson disease-8.

Immunogen Information

Gene ID	Swiss Prot
120892	Q55007

Immunogen

Recombinant fusion protein containing a sequence corresponding to amino acids 2355-2527 of human LRRK2 (NP_940980.3).

Synonyms

LRRK2;AURA17;DARDARIN;PARK8;RIPK7;ROCO2

Product Information

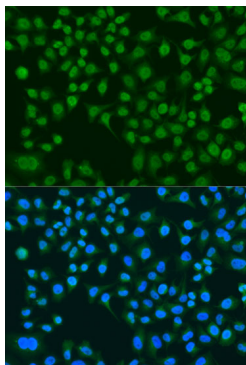
Source	Isotype	Purification
Rabbit	IgG	Affinity purification

Storage

Store at -20°C. Avoid freeze / thaw cycles.

Buffer: PBS with 0.02% sodium azide,50% glycerol,pH7.3.

Validation Data



Immunofluorescence analysis of U2OS cells using LRRK2 antibody (A0859) at dilution of 1:100. Blue: DAPI for nuclear staining.