

IGF1 Rabbit mAb

Catalog No.: A0830 **Recombinant**

Basic Information

Catalog No.

A0830

Observed MW

13kDa

Calculated MW

10kDa

Category

Primary antibody

Applications

WB, IHC

Cross-Reactivity

Human, Mouse, Rat

Recommended Dilutions

WB 1:500 - 1:2000**IHC** 1:50 - 1:200

Background

The protein encoded by this gene is similar to insulin in function and structure and is a member of a family of proteins involved in mediating growth and development. The encoded protein is processed from a precursor, bound by a specific receptor, and secreted. Defects in this gene are a cause of insulin-like growth factor I deficiency. Alternative splicing results in multiple transcript variants encoding different isoforms that may undergo similar processing to generate mature protein. [provided by RefSeq, Sep 2015]

Immunogen Information

Gene ID

3479

Swiss Prot

P05019

Immunogen

A synthesized peptide derived from human IGF1

Synonyms

IGF-I; IGF1; MGF

Contact

www.abclonal.com

Product Information

Source

Rabbit

Isotype

IgG

Purification

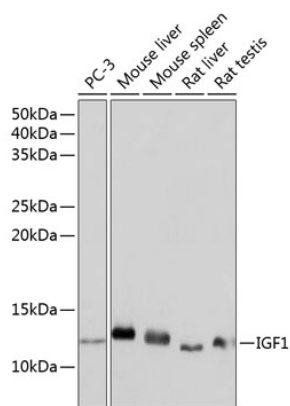
Affinity purification

Storage

Store at -20°C. Avoid freeze / thaw cycles.

Buffer: PBS with 0.02% sodium azide, 0.05% BSA, 50% glycerol, pH7.3.

Validation Data



Western blot analysis of extracts of various cell lines, using IGF1 Rabbit mAb (A0830) at 1: 1000 dilution.

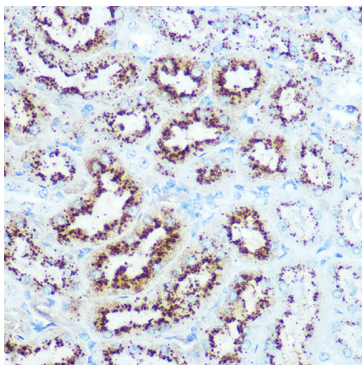
Secondary antibody: HRP Goat Anti-Rabbit IgG (H+L) (AS014) at 1:10000 dilution.

Lysates/proteins: 25ug per lane.

Blocking buffer: 3% nonfat dry milk in TBST.

Detection: ECL Basic Kit (RM00020).

Exposure time: 2min.



Immunohistochemistry of paraffin-embedded mouse kidney using IGF1 Rabbit mAb (A0830) at dilution of 1:100 (40x lens). Perform microwave antigen retrieval with 10 mM PBS buffer pH 7.2 before commencing with IHC staining protocol.