

# SR-BI Rabbit mAb

Catalog No.: A0827 **Recombinant**

## Basic Information

### Catalog No.

A0827

### Observed MW

80kDa

### Calculated MW

80kDa

### Category

Primary antibody

### Applications

WB, IHC

### Cross-Reactivity

Human, Mouse, Rat

## Recommended Dilutions

<b>WB</b>	1:500 - 1:2000
<b>IHC</b>	1:50 - 1:200

## Contact

 | [www.abclonal.com](http://www.abclonal.com)

## Background

The protein encoded by this gene is a plasma membrane receptor for high density lipoprotein cholesterol (HDL). The encoded protein mediates cholesterol transfer to and from HDL. In addition, this protein is a receptor for hepatitis C virus glycoprotein E2. Two transcript variants encoding different isoforms have been found for this gene.[provided by RefSeq, Mar 2011]

## Immunogen Information

<b>Gene ID</b>	<b>Swiss Prot</b>
949	Q8WTV0

### Immunogen

A synthesized peptide derived from human SR-BI

### Synonyms

CD36L1; CLA-1; CLA1; HDLQTL6; SR-BI; SRB1

## Product Information

<b>Source</b>	<b>Isotype</b>	<b>Purification</b>
Rabbit	IgG	Affinity purification

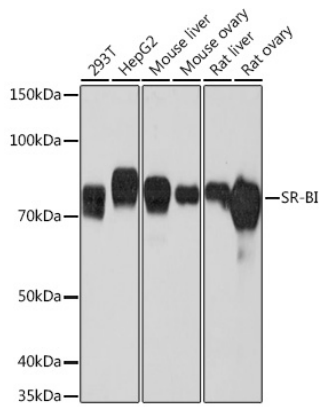
### Storage

Store at -20°C. Avoid freeze / thaw cycles.

Buffer: PBS with 0.02% sodium azide, 0.05% BSA, 50% glycerol, pH7.3.

## Validation Data

---



Western blot analysis of extracts of various cell lines, using SR-BI Rabbit mAb (A0827) at 1: 1000 dilution.

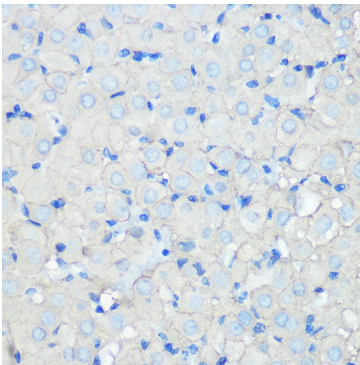
Secondary antibody: HRP Goat Anti-Rabbit IgG (H+L) (AS014) at 1:10000 dilution.

Lysates/proteins: 25ug per lane.

Blocking buffer: 3% nonfat dry milk in TBST.

Detection: ECL Basic Kit (RM00020).

Exposure time: 30s.



Immunohistochemistry of paraffin-embedded rat ovary using SR-BI Rabbit mAb (A0827) at dilution of 1:100 (40x lens).