

# IRF3 Rabbit pAb

Catalog No.: A0816 **3 Publications**

## Basic Information

**Catalog No.**

A0816

**Observed MW**

47kDa.55kDa

**Calculated MW**

12kDa/16kDa/33kDa/47kDa/49kDa

**Category**

Primary antibody

**Applications**

WB, IHC, IF

**Cross-Reactivity**

Human, Mouse, Rat

## Recommended Dilutions

<b>WB</b>	1:500 - 1:2000
<b>IHC</b>	1:50 - 1:200
<b>IF</b>	1:50 - 1:200

## Contact

 | [www.abclonal.com](http://www.abclonal.com)

## Background

This gene encodes a member of the interferon regulatory transcription factor (IRF) family. The encoded protein is found in an inactive cytoplasmic form that upon serine/threonine phosphorylation forms a complex with CREBBP. This complex translocates to the nucleus and activates the transcription of interferons alpha and beta, as well as other interferon-induced genes. Alternatively spliced transcript variants encoding multiple isoforms have been observed for this gene.

## Immunogen Information

<b>Gene ID</b>	<b>Swiss Prot</b>
3661	Q14653

**Immunogen**

Recombinant fusion protein containing a sequence corresponding to amino acids 100-200 of human IRF3 (NP\_001184051.1).

**Synonyms**

IIAE7;IRF3

## Product Information

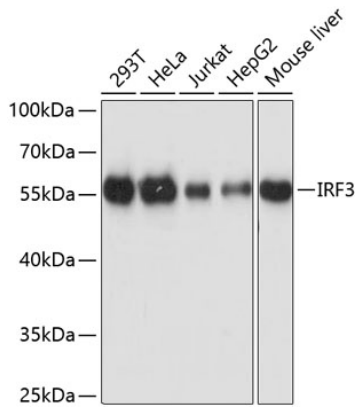
<b>Source</b>	<b>Isotype</b>	<b>Purification</b>
Rabbit	IgG	Affinity purification

**Storage**

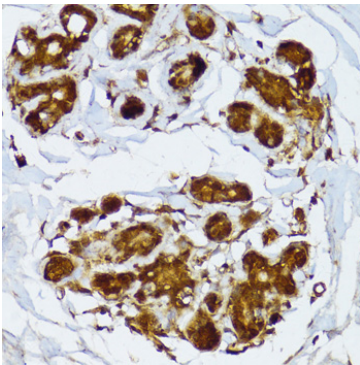
Store at -20°C. Avoid freeze / thaw cycles.

Buffer: PBS with 0.02% sodium azide,50% glycerol,pH7.3.

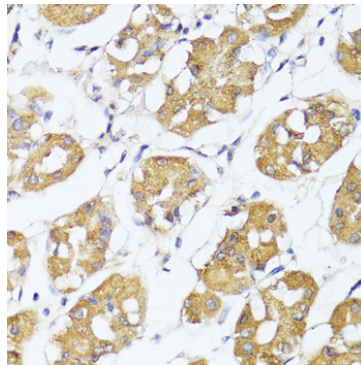
## Validation Data



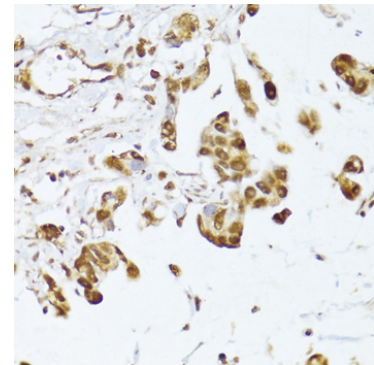
Western blot analysis of extracts of various cell lines, using IRF3 antibody (A0816) at 1:3000 dilution. Secondary antibody: HRP Goat Anti-Rabbit IgG (H+L) (AS014) at 1:10000 dilution. Lysates/proteins: 25ug per lane. Blocking buffer: 3% nonfat dry milk in TBST. Detection: ECL Basic Kit (RM00020). Exposure time: 1s.



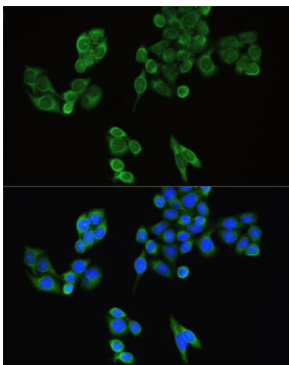
Immunohistochemistry of paraffin-embedded human breast using IRF3 antibody (A0816) at dilution of 1:100 (40x lens).



Immunohistochemistry of paraffin-embedded human stomach using IRF3 antibody (A0816) at dilution of 1:100 (40x lens).



Immunohistochemistry of paraffin-embedded human gastric cancer using IRF3 antibody (A0816) at dilution of 1:100 (40x lens).



Immunofluorescence analysis of HeLa cells using IRF3 antibody (A0816) at dilution of 1:100. Blue: DAPI for nuclear staining.