

Calbindin Rabbit pAb

Catalog No.: A0802

Basic Information

Catalog No.

A0802

Observed MW

30kDa

Calculated MW

23kDa/30kDa

Category

Primary antibody

Applications

WB, IHC

Cross-Reactivity

Human, Mouse, Rat

Recommended Dilutions

WB	1:500 - 1:2000
IHC	1:50 - 1:100

Background

The protein encoded by this gene is a member of the calcium-binding protein superfamily that includes calmodulin and troponin C. Originally described as a 27 kDa protein, it is now known to be a 28 kDa protein. It contains four active calcium-binding domains, and has two modified domains that are thought to have lost their calcium binding capability. This protein is thought to buffer entry of calcium upon stimulation of glutamate receptors. Depletion of this protein was noted in patients with Huntington disease.

Immunogen Information

Gene ID	Swiss Prot
793	P05937


Immunogen

Recombinant fusion protein containing a sequence corresponding to amino acids 1-261 of human Calbindin (NP_004920.1).

Synonyms

CALB1;CALB;D-28K;calbindin;Calbindin

Contact

 | www.abclonal.com

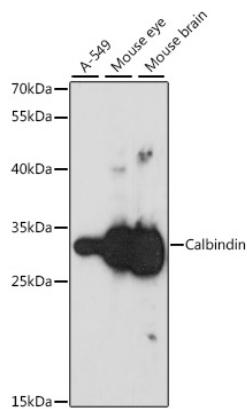
Product Information

Source	Isotype	Purification
Rabbit	IgG	Affinity purification

Storage

Store at -20°C. Avoid freeze / thaw cycles.
Buffer: PBS with 0.02% sodium azide,50% glycerol,pH7.3.

Validation Data



Western blot analysis of extracts of various cell lines, using Calbindin antibody (A0802) at 1:1000 dilution.

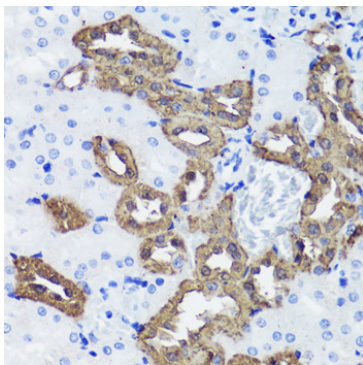
Secondary antibody: HRP Goat Anti-Rabbit IgG (H+L) (AS014) at 1:10000 dilution.

Lysates/proteins: 25ug per lane.

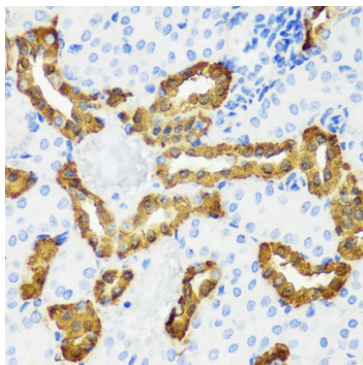
Blocking buffer: 3% nonfat dry milk in TBST.

Detection: ECL Basic Kit (RM00020).

Exposure time: 30s.



Immunohistochemistry of paraffin-embedded rat kidney using Calbindin antibody (A0802) at dilution of 1:100 (40x lens).



Immunohistochemistry of paraffin-embedded mouse kidney using Calbindin antibody (A0802) at dilution of 1:100 (40x lens).