

ELK1 Rabbit pAb

Catalog No.: A0789 **1 Publications**

Basic Information

Catalog No.

A0789

Observed MW

62KDa

Calculated MW

11kDa/44kDa

Category

Primary antibody

Applications

WB

Cross-Reactivity

Human, Mouse, Rat

Recommended Dilutions

WB 1:1000 - 1:2000

Background

This gene is a member of the Ets family of transcription factors and of the ternary complex factor (TCF) subfamily. Proteins of the TCF subfamily form a ternary complex by binding to the the serum response factor and the serum response element in the promoter of the c-fos proto-oncogene. The protein encoded by this gene is a nuclear target for the ras-raf-MAPK signaling cascade. This gene produces multiple isoforms by using alternative translational start codons and by alternative splicing. Related pseudogenes have been identified on chromosomes 7 and 14.

Immunogen Information

Gene ID

2002

Swiss Prot

P19419

Immunogen

Recombinant fusion protein containing a sequence corresponding to amino acids 90-250 of human ELK1 (NP_005220.2).

Synonyms

ELK1

Contact

 | www.abclonal.com

Product Information

Source

Rabbit

Isotype

IgG

Purification

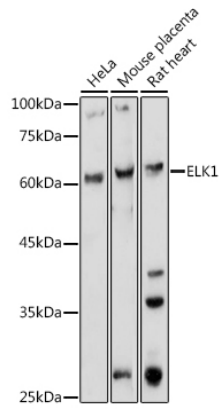
Affinity purification

Storage

Store at -20°C. Avoid freeze / thaw cycles.

Buffer: PBS with 0.02% sodium azide,50% glycerol,pH7.3.

Validation Data



Western blot analysis of extracts of various cell lines, using ELK1 antibody (A0789) at 1:1000 dilution.
Secondary antibody: HRP Goat Anti-Rabbit IgG (H+L) (AS014) at 1:10000 dilution.
Lysates/proteins: 25ug per lane.
Blocking buffer: 3% nonfat dry milk in TBST.
Detection: ECL Basic Kit (RM00020).
Exposure time: 1s.