

APAF1 Rabbit pAb

Catalog No.: A0751

Basic Information

Catalog No.

A0751

Observed MW

150kDa

Calculated MW

37kDa/133kDa/135kDa/137kDa/140kDa/141kDa

Category

Primary antibody

Applications

WB, IF

Cross-Reactivity

Human, Mouse, Rat

Recommended Dilutions

WB	1:500 - 1:2000
IF	1:50 - 1:200

Contact

 | www.abclonal.com

Background

This gene encodes a cytoplasmic protein that initiates apoptosis. This protein contains several copies of the WD-40 domain, a caspase recruitment domain (CARD), and an ATPase domain (NB-ARC). Upon binding cytochrome c and dATP, this protein forms an oligomeric apoptosome. The apoptosome binds and cleaves caspase 9 preproprotein, releasing its mature, activated form. Activated caspase 9 stimulates the subsequent caspase cascade that commits the cell to apoptosis. Alternative splicing results in several transcript variants encoding different isoforms.

Immunogen Information

Gene ID	Swiss Prot
317	O14727

Immunogen

Recombinant fusion protein containing a sequence corresponding to amino acids 1-250 of human APAF1 (NP_863651.1).

Synonyms

APAF1;APAF-1;CED4

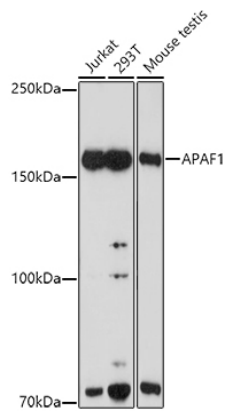
Product Information

Source	Isotype	Purification
Rabbit	IgG	Affinity purification

Storage

Store at -20°C. Avoid freeze / thaw cycles.
Buffer: PBS with 0.02% sodium azide,50% glycerol,pH7.3.

Validation Data



Western blot analysis of extracts of various cell lines, using APAF1 antibody (A0751) at 1:1000 dilution.

Secondary antibody: HRP Goat Anti-Rabbit IgG (H+L) (AS014) at 1:10000 dilution.

Lysates/proteins: 25ug per lane.

Blocking buffer: 3% nonfat dry milk in TBST.

Detection: ECL Basic Kit (RM00020).

Exposure time: 90s.