

ErbB4/HER4 Rabbit pAb

Catalog No.: A0749 **1 Publications**

Basic Information

Catalog No.

A0749

Observed MW

147kDa

Calculated MW

143kDa/145kDa/146kDa

Category

Primary antibody

Applications

WB, IF

Cross-Reactivity

Human, Rat

Recommended Dilutions

WB	1:500 - 1:2000
IF	1:50 - 1:200

Contact

 | www.abclonal.com

Background

This gene is a member of the Tyr protein kinase family and the epidermal growth factor receptor subfamily. It encodes a single-pass type I membrane protein with multiple cysteine rich domains, a transmembrane domain, a tyrosine kinase domain, a phosphatidylinositol-3 kinase binding site and a PDZ domain binding motif. The protein binds to and is activated by neuregulins and other factors and induces a variety of cellular responses including mitogenesis and differentiation. Multiple proteolytic events allow for the release of a cytoplasmic fragment and an extracellular fragment. Mutations in this gene have been associated with cancer. Alternatively spliced variants which encode different protein isoforms have been described; however, not all variants have been fully characterized.

Immunogen Information

Gene ID	Swiss Prot
2066	Q15303

Immunogen

A synthetic peptide corresponding to a sequence within amino acids 1150-1250 of human ErbB4/HER4/HER4 (NP_005226.1).

Synonyms

ALS19;HER4;p180erbB4;ERBB4;HER4/ErbB4

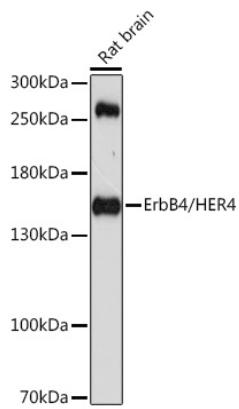
Product Information

Source	Isotype	Purification
Rabbit	IgG	Affinity purification

Storage

Store at -20°C. Avoid freeze / thaw cycles.
Buffer: PBS with 0.02% sodium azide,50% glycerol,pH7.3.

Validation Data



Western blot analysis of extracts of rat brain, using ErbB4/HER4/HER4 antibody (A0749) at 1:1000 dilution.

Secondary antibody: HRP Goat Anti-Rabbit IgG (H+L) (AS014) at 1:10000 dilution.

Lysates/proteins: 25ug per lane.

Blocking buffer: 3% nonfat dry milk in TBST.

Detection: ECL Basic Kit (RM00020).

Exposure time: 90s.