

# TEK Rabbit pAb

Catalog No.: A0743 **1 Publications**

## Basic Information

**Catalog No.**

A0743

**Observed MW**

150kDa

**Calculated MW**

109kDa/121kDa/125kDa

**Category**

Primary antibody

**Applications**

WB, IHC

**Cross-Reactivity**

Human, Mouse, Rat

## Recommended Dilutions

<b>WB</b>	1:500 - 1:1000
<b>IHC</b>	1:50 - 1:100

## Contact

 | [www.abclonal.com](http://www.abclonal.com)

## Background

This gene encodes a receptor that belongs to the protein tyrosine kinase Tie2 family. The encoded protein possesses a unique extracellular region that contains two immunoglobulin-like domains, three epidermal growth factor (EGF)-like domains and three fibronectin type III repeats. The ligand angiopoietin-1 binds to this receptor and mediates a signaling pathway that functions in embryonic vascular development. Mutations in this gene are associated with inherited venous malformations of the skin and mucous membranes. Alternative splicing results in multiple transcript variants. Additional alternatively spliced transcript variants of this gene have been described, but their full-length nature is not known.

## Immunogen Information

<b>Gene ID</b>	<b>Swiss Prot</b>
7010	Q02763

**Immunogen**

Recombinant fusion protein containing a sequence corresponding to amino acids 500-750 of human TEK (NP\_000450.2).

**Synonyms**

TEK; CD202B; GLC3E; TIE-2; TIE2; VMCM; VMCM1; Tie2

## Product Information

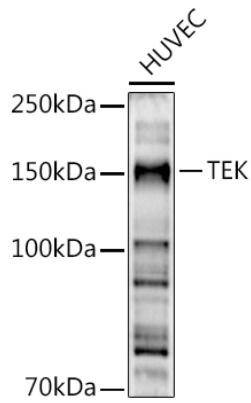
<b>Source</b>	<b>Isotype</b>	<b>Purification</b>
Rabbit	IgG	Affinity purification

**Storage**

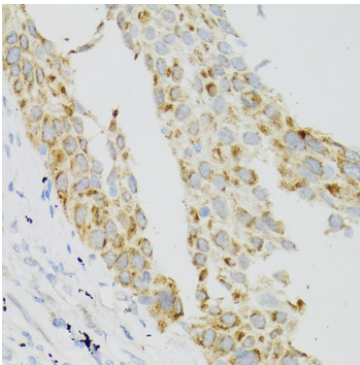
Store at -20°C. Avoid freeze / thaw cycles.  
Buffer: PBS with 0.02% sodium azide, 50% glycerol, pH7.3.

## Validation Data

---



Western blot analysis of extracts of HUVEC cells, using TEK antibody (A0743) at 1:500 dilution.  
Secondary antibody: HRP Goat Anti-Rabbit IgG (H+L) (AS014) at 1:10000 dilution.  
Lysates/proteins: 25ug per lane.  
Blocking buffer: 3% nonfat dry milk in TBST.  
Detection: ECL Basic Kit (RM00020).  
Exposure time: 90s.



Immunohistochemistry of paraffin-embedded human lung cancer using TEK antibody (A0743) at dilution of 1:100 (40x lens).