

# TSC1 Rabbit pAb

Catalog No.: A0720 **1 Publications**

## Basic Information

---

### Catalog No.

A0720

### Observed MW

150KDa

### Calculated MW

124kDa/129kDa

### Category

Primary antibody

### Applications

WB, IHC, IF

### Cross-Reactivity

Human, Mouse, Rat

## Recommended Dilutions

---

<b>WB</b>	1:500 - 1:1000
<b>IHC</b>	1:50 - 1:100
<b>IF</b>	1:50 - 1:100

## Contact

---

 | [www.abclonal.com](http://www.abclonal.com)

## Background

---

This gene encodes a growth inhibitory protein thought to play a role in the stabilization of tuberin. Mutations in this gene have been associated with tuberous sclerosis. Alternative splicing results in multiple transcript variants.

## Immunogen Information

---

<b>Gene ID</b>	<b>Swiss Prot</b>
7248	Q92574

### Immunogen

A synthetic peptide corresponding to a sequence within amino acids 550-650 of human TSC1 (NP\_000359.1).

### Synonyms

TSC1;LAM;TSC;hamartin

## Product Information

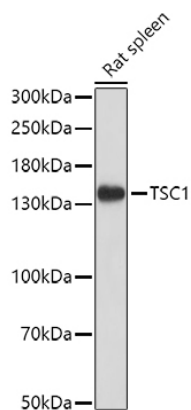
---

<b>Source</b>	<b>Isotype</b>	<b>Purification</b>
Rabbit	IgG	Affinity purification

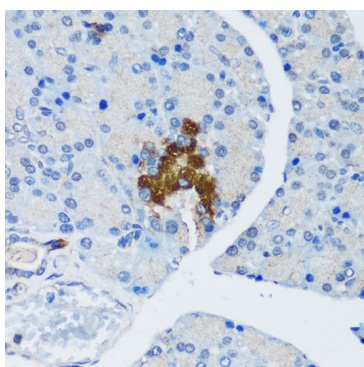
### Storage

Store at -20°C. Avoid freeze / thaw cycles.  
Buffer: PBS with 0.02% sodium azide,50% glycerol,pH7.3.

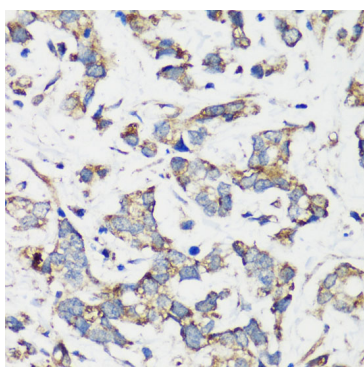
## Validation Data



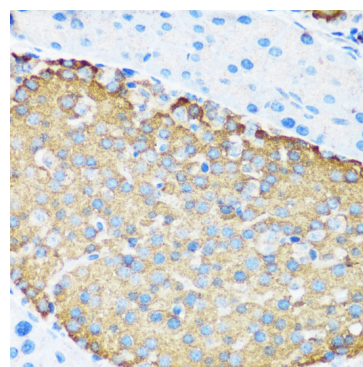
Western blot analysis of extracts of Rat spleen, using TSC1 antibody (A0720) at 1:1000 dilution.  
Secondary antibody: HRP Goat Anti-Rabbit IgG (H+L) (AS014) at 1:10000 dilution.  
Lysates/proteins: 25ug per lane.  
Blocking buffer: 3% nonfat dry milk in TBST.  
Detection: ECL Basic Kit (RM00020).  
Exposure time: 30s.



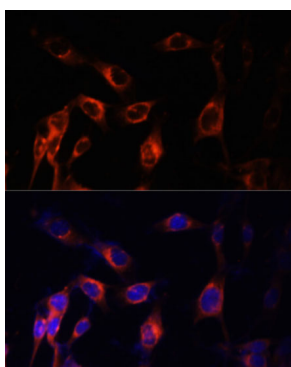
Immunohistochemistry of paraffin-embedded rat pancreatic islet using TSC1 antibody (A0720) at dilution of 1:200 (40x lens).



Immunohistochemistry of paraffin-embedded human gastric cancer using TSC1 antibody (A0720) at dilution of 1:200 (40x lens).



Immunohistochemistry of paraffin-embedded mouse pancreatic islet using TSC1 antibody (A0720) at dilution of 1:200 (40x lens).



Immunofluorescence analysis of NIH-3T3 cells using TSC1 Polyclonal Antibody (A0720) at dilution of 1:100 (40x lens).  
Blue: DAPI for nuclear staining.