

# Integrin alpha 4 (ITGA4/CD49d) Rabbit pAb

Catalog No.: A0696

## Basic Information

### Catalog No.

A0696

### Observed MW

80kDa/130kDa/160kDa/170kDa

### Calculated MW

21kDa/114kDa

### Category

Primary antibody

### Applications

WB, IHC

### Cross-Reactivity

Human, Mouse, Rat

## Recommended Dilutions

<b>WB</b>	1:500 - 1:2000
<b>IHC</b>	1:50 - 1:100

## Contact

 | [www.abclonal.com](http://www.abclonal.com)

## Background

The gene encodes a member of the integrin alpha chain family of proteins. Integrins are heterodimeric integral membrane proteins composed of an alpha chain and a beta chain that function in cell surface adhesion and signaling. The encoded preproprotein is proteolytically processed to generate light and heavy chains that comprise the alpha 4 subunit. This subunit associates with a beta 1 or beta 7 subunit to form an integrin that may play a role in cell motility and migration. This integrin is a therapeutic target for the treatment of multiple sclerosis, Crohn's disease and inflammatory bowel disease. Alternative splicing results in multiple transcript variants.

## Immunogen Information

<b>Gene ID</b>	<b>Swiss Prot</b>
3676	P13612

### Immunogen

A synthetic peptide corresponding to a sequence within amino acids 900 to the C-terminus of human Integrin alpha 4 (Integrin alpha 4 (ITGA4/CD49d)/CD49d) (NP\_000876.3).

### Synonyms

ITGA4;CD49D;IA4

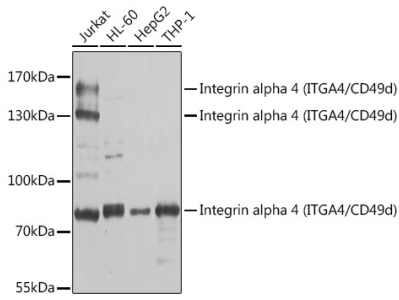
## Product Information

<b>Source</b>	<b>Isotype</b>	<b>Purification</b>
Rabbit	IgG	Affinity purification

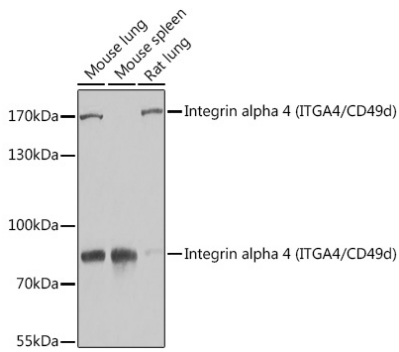
### Storage

Store at -20°C. Avoid freeze / thaw cycles.  
Buffer: PBS with 0.02% sodium azide, 50% glycerol, pH7.3.

## Validation Data



Western blot analysis of extracts of various cell lines, using Integrin alpha 4 (Integrin alpha 4 (ITGA4/CD49d)/CD49d) antibody (A0696) at 1:1000 dilution.  
Secondary antibody: HRP Goat Anti-Rabbit IgG (H+L) (AS014) at 1:10000 dilution.  
Lysates/proteins: 25ug per lane.  
Blocking buffer: 3% nonfat dry milk in TBST.  
Detection: ECL Basic Kit (RM00020).  
Exposure time: 30s.



Western blot analysis of extracts of various cell lines, using Integrin alpha 4 (Integrin alpha 4 (ITGA4/CD49d)/CD49d) antibody (A0696) at 1:1000 dilution.  
Secondary antibody: HRP Goat Anti-Rabbit IgG (H+L) (AS014) at 1:10000 dilution.  
Lysates/proteins: 25ug per lane.  
Blocking buffer: 3% nonfat dry milk in TBST.  
Detection: ECL Basic Kit (RM00020).  
Exposure time: 60s.