

# ATG7 Rabbit pAb

Catalog No.: A0691 **6 Publications**

## Basic Information

**Catalog No.**

A0691

**Observed MW**

78kDa

**Calculated MW**

68kDa/75kDa/77kDa

**Category**

Primary antibody

**Applications**

WB, IHC, IF

**Cross-Reactivity**

Human, Mouse, Rat

## Recommended Dilutions

<b>WB</b>	1:500 - 1:2000
<b>IHC</b>	1:50 - 1:200
<b>IF</b>	1:50 - 1:200

## Contact

 | [www.abclonal.com](http://www.abclonal.com)

## Background

This gene encodes an E1-like activating enzyme that is essential for autophagy and cytoplasmic to vacuole transport. The encoded protein is also thought to modulate p53-dependent cell cycle pathways during prolonged metabolic stress. It has been associated with multiple functions, including axon membrane trafficking, axonal homeostasis, mitophagy, adipose differentiation, and hematopoietic stem cell maintenance. Alternative splicing results in multiple transcript variants.

## Immunogen Information

<b>Gene ID</b>	<b>Swiss Prot</b>
10533	O95352

**Immunogen**

Recombinant fusion protein containing a sequence corresponding to amino acids 500-676 of human ATG7 (NP\_001129503.2).

**Synonyms**

ATG7;APG7-LIKE;APG7L;GSA7;Apg7/Atg7

## Product Information

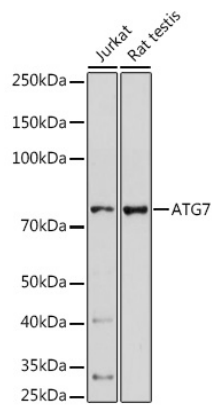
<b>Source</b>	<b>Isotype</b>	<b>Purification</b>
Rabbit	IgG	Affinity purification

**Storage**

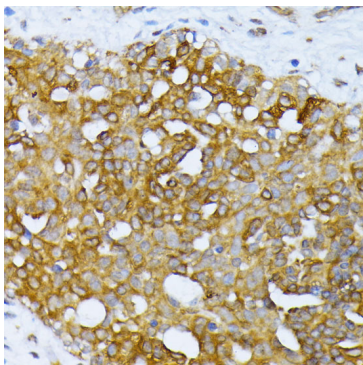
Store at -20°C. Avoid freeze / thaw cycles.

Buffer: PBS with 0.02% sodium azide, 50% glycerol, pH7.3.

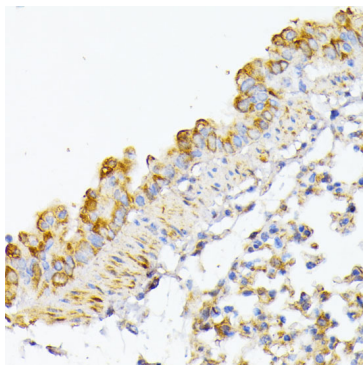
## Validation Data



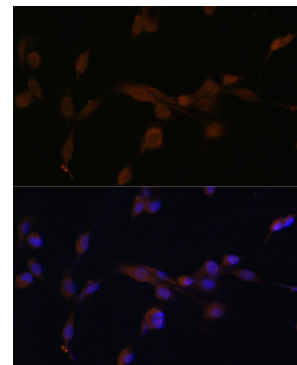
Western blot analysis of extracts of various cell lines, using ATG7 antibody (A0691) at 1:1000 dilution. Secondary antibody: HRP Goat Anti-Rabbit IgG (H+L) (AS014) at 1:10000 dilution. Lysates/proteins: 25ug per lane. Blocking buffer: 3% nonfat dry milk in TBST. Detection: ECL Basic Kit (RM00020). Exposure time: 90s.



Immunohistochemistry of paraffin-embedded human breast cancer using ATG7 antibody (A0691) at dilution of 1:100 (40x lens).



Immunohistochemistry of paraffin-embedded mouse lung using ATG7 antibody (A0691) at dilution of 1:100 (40x lens).



Immunofluorescence analysis of NIH/3T3 cells using ATG7 antibody (A0691) at dilution of 1:100. Blue: DAPI for nuclear staining.