

# SMNDC1 Rabbit pAb

Catalog No.: A0681

## Basic Information

### Catalog No.

A0681

### Observed MW

27kDa

### Calculated MW

26kDa

### Category

Primary antibody

### Applications

WB

### Cross-Reactivity

Human, Mouse, Rat

## Recommended Dilutions

WB 1:500 - 1:2000

## Background

This gene is a paralog of SMN1 gene, which encodes the survival motor neuron protein, mutations in which are cause of autosomal recessive proximal spinal muscular atrophy. The protein encoded by this gene is a nuclear protein that has been identified as a constituent of the spliceosome complex. This gene is differentially expressed, with abundant levels in skeletal muscle, and may share similar cellular function as the SMN1 gene.

## Immunogen Information

### Gene ID

10285

### Swiss Prot

O75940

### Immunogen

Recombinant fusion protein containing a sequence corresponding to amino acids 1-238 of human SMNDC1 (NP\_005862.1).

### Synonyms

SMNDC1;SMNR;SPF30;TDRD16C

## Contact

 | [www.abclonal.com](http://www.abclonal.com)

## Product Information

### Source

Rabbit

### Isotype

IgG

### Purification

Affinity purification

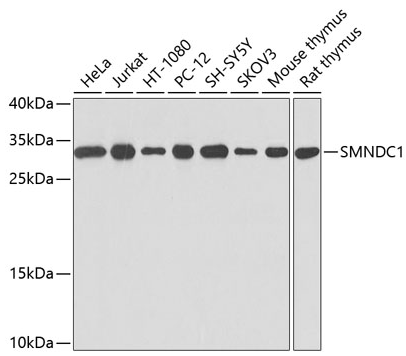
### Storage

Store at -20°C. Avoid freeze / thaw cycles.

Buffer: PBS with 0.02% sodium azide,50% glycerol,pH7.3.

## Validation Data

---



Western blot analysis of extracts of various cell lines, using SMNDC1 antibody (A0681) at 1:1000 dilution.

Secondary antibody: HRP Goat Anti-Rabbit IgG (H+L) (AS014) at 1:10000 dilution.

Lysates/proteins: 25ug per lane.

Blocking buffer: 3% nonfat dry milk in TBST.

Detection: ECL Basic Kit (RM00020).

Exposure time: 10s.