

CaMKII delta Rabbit pAb

Catalog No.: A0656

Basic Information

Catalog No.

A0656

Observed MW

50kDa

Calculated MW

54kDa/55kDa/56kDa/57kDa/58kDa/59kDa

Category

Primary antibody

Applications

WB, IHC, IF

Cross-Reactivity

Human, Mouse, Rat

Recommended Dilutions

WB 1:500 - 1:1000

IHC 1:50 - 1:100

IF 1:20 - 1:50

Background

The product of this gene belongs to the serine/threonine protein kinase family and to the Ca(2+)/calmodulin-dependent protein kinase subfamily. Calcium signaling is crucial for several aspects of plasticity at glutamatergic synapses. In mammalian cells, the enzyme is composed of four different chains: alpha, beta, gamma, and delta. The product of this gene is a delta chain. Alternative splicing results in multiple transcript variants encoding distinct isoforms. Distinct isoforms of this chain have different expression patterns.

Immunogen Information

Gene ID

817

Swiss Prot

Q13557

Immunogen

Recombinant fusion protein containing a sequence corresponding to amino acids 1-260 of human CaMKII delta (NP_742125.1).

Synonyms

CAMK2D;CAMKD

Contact

 | www.abclonal.com

Product Information

Source

Rabbit

Isotype

IgG

Purification

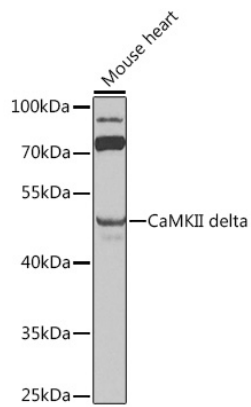
Affinity purification

Storage

Store at -20°C. Avoid freeze / thaw cycles.

Buffer: PBS with 0.02% sodium azide, 50% glycerol, pH7.3.

Validation Data



Western blot analysis of extracts of mouse heart, using CaMKII delta antibody (A0656) at 1:1000 dilution. Secondary antibody: HRP Goat Anti-Rabbit IgG (H+L) (AS014) at 1:10000 dilution. Lysates/proteins: 25ug per lane. Blocking buffer: 3% nonfat dry milk in TBST. Detection: ECL Enhanced Kit (RM00021). Exposure time: 90s.