

A0653

Leader in Biomolecular Solutions for Life Science



CPT2 Rabbit mAb

Catalog No.: A0653 **Recombinant** **2 Publications**

Basic Information

Observed MW

70kDa

Calculated MW

74kDa

Category

SMab Recombinant Monoclonal Antibody

Applications

WB,ELISA

Cross-Reactivity

Human,Mouse,Rat

CloneNo number

ARC0516

Background

The protein encoded by this gene is a nuclear protein which is transported to the mitochondrial inner membrane. Together with carnitine palmitoyltransferase I, the encoded protein oxidizes long-chain fatty acids in the mitochondria. Defects in this gene are associated with mitochondrial long-chain fatty-acid (LCFA) oxidation disorders.

Recommended Dilutions

WB 1:500 - 1:1000

Immunogen Information

Gene ID

1376

Swiss Prot

P23786

Immunogen

A synthetic peptide corresponding to a sequence within amino acids 559-658 of human CPT2 (P23786).

Synonyms

CPT1; IIAE4; CPTASE; CPT2

Contact



www.abclonal.com

Product Information

Source

Rabbit

Isotype

IgG

Purification

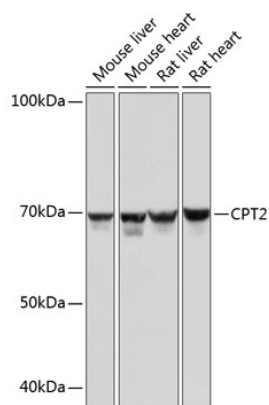
Affinity purification

Storage

Store at -20°C. Avoid freeze / thaw cycles.

Buffer: PBS with 0.02% sodium azide,0.05% BSA,50% glycerol,pH7.3.

Validation Data



Western blot analysis of extracts of various cell lines, using CPT2 Rabbit mAb (A0653) at 1:1000 dilution.
Secondary antibody: HRP Goat Anti-Rabbit IgG (H+L) (AS014) at 1:10000 dilution.
Lysates/proteins: 25µg per lane.
Blocking buffer: 3% nonfat dry milk in TBST.
Detection: ECL Basic Kit (RM00020).
Exposure time: 5s.

Western blot analysis of extracts of various cell lines, using CPT2 Rabbit mAb (A0653) at 1:1000 dilution.
Secondary antibody: HRP Goat Anti-Rabbit IgG (H+L) (AS014) at 1:10000 dilution.
Lysates/proteins: 25µg per lane.
Blocking buffer: 3% nonfat dry milk in TBST.
Detection: ECL Basic Kit (RM00020).
Exposure time: 3min.

