

# TNFRSF6B Rabbit pAb

Catalog No.: A0649

## Basic Information

### Catalog No.

A0649

### Observed MW

33KDa

### Calculated MW

32kDa

### Category

Primary antibody

### Applications

WB, IHC

### Cross-Reactivity

Human, Rat

## Recommended Dilutions

<b>WB</b>	1:500 - 1:2000
<b>IHC</b>	1:50 - 1:200

## Contact

 | [www.abclonal.com](http://www.abclonal.com)

## Background

This gene belongs to the tumor necrosis factor receptor superfamily. The encoded protein is postulated to play a regulatory role in suppressing FasL- and LIGHT-mediated cell death. It acts as a decoy receptor that competes with death receptors for ligand binding. Over-expression of this gene has been noted in gastrointestinal tract tumors. Read-through transcription into this gene from the neighboring upstream gene, which encodes regulator of telomere elongation helicase 1 (RTEL1), generates a non-coding transcript.

## Immunogen Information

<b>Gene ID</b>	<b>Swiss Prot</b>
8771	O95407

### Immunogen

Recombinant fusion protein containing a sequence corresponding to amino acids 35-300 of human TNFRSF6B (NP\_003814.1).

### Synonyms

TNFRSF6B;DCR3;DJ583P15.1.1;M68;M68E;TR6

## Product Information

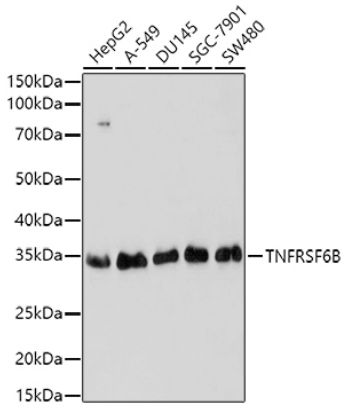
<b>Source</b>	<b>Isotype</b>	<b>Purification</b>
Rabbit	IgG	Affinity purification

### Storage

Store at -20°C. Avoid freeze / thaw cycles.

Buffer: PBS with 0.02% sodium azide,50% glycerol,pH7.3.

## Validation Data



Western blot analysis of extracts of various cell lines, using TNFRSF6B antibody (A0649) at 1:1000 dilution.

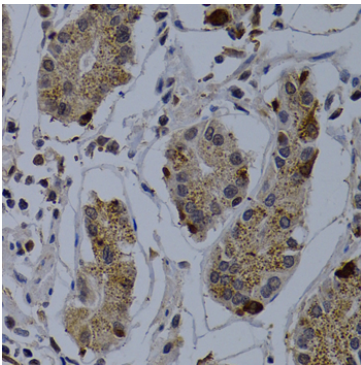
Secondary antibody: HRP Goat Anti-Rabbit IgG (H+L) (AS014) at 1:10000 dilution.

Lysates/proteins: 25ug per lane.

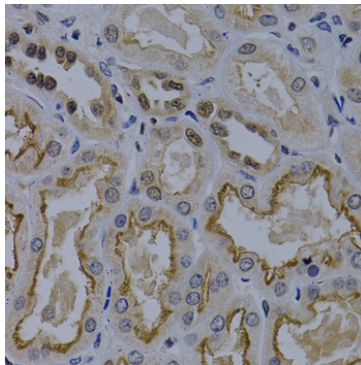
Blocking buffer: 3% nonfat dry milk in TBST.

Detection: ECL Basic Kit (RM00020).

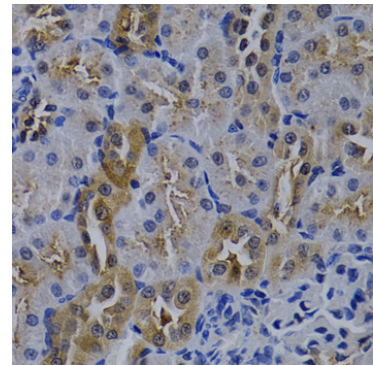
Exposure time: 60s.



Immunohistochemistry of paraffin-embedded human stomach using TNFRSF6B antibody (A0649) at dilution of 1:200 (40x lens).



Immunohistochemistry of paraffin-embedded human kidney cancer using TNFRSF6B antibody (A0649) at dilution of 1:200 (40x lens).



Immunohistochemistry of paraffin-embedded rat kidney using TNFRSF6B antibody (A0649) at dilution of 1:200 (40x lens).