

# TCL1A Rabbit pAb

Catalog No.: A0629

## Basic Information

---

**Catalog No.**

A0629

**Observed MW**

16kDa

**Calculated MW**

13kDa

**Category**

Primary antibody

**Applications**

WB, IF

**Cross-Reactivity**

Human

## Recommended Dilutions

---

**WB** 1:500 - 1:2000

**IF** 1:10 - 1:100

## Background

---

## Immunogen Information

---

**Gene ID**

8115

**Swiss Prot**

P56279

**Immunogen**

Recombinant fusion protein containing a sequence corresponding to amino acids 1-114 of human TCL1A (NP\_001092195.1).

**Synonyms**

TCL1A;TCL1

## Contact

---

 | [www.abclonal.com](http://www.abclonal.com)

## Product Information

---

**Source**

Rabbit

**Isotype**

IgG

**Purification**

Affinity purification

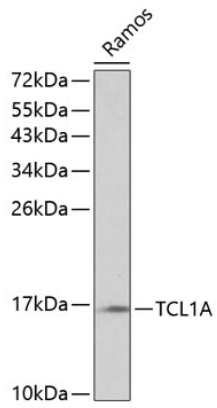
**Storage**

Store at -20°C. Avoid freeze / thaw cycles.

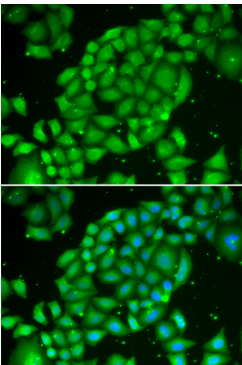
Buffer: PBS with 0.02% sodium azide,50% glycerol,pH7.3.

## Validation Data

---



Western blot analysis of extracts of Ramos cells, using TCL1A antibody (A0629) at 1:1000 dilution.  
Secondary antibody: HRP Goat Anti-Rabbit IgG (H+L) (AS014) at 1:10000 dilution.  
Lysates/proteins: 25ug per lane.  
Blocking buffer: 3% nonfat dry milk in TBST.



Immunofluorescence analysis of U2OS cells using TCL1A antibody (A0629). Blue: DAPI for nuclear staining.