

YES1 Rabbit pAb

Catalog No.: A0628

Basic Information

Catalog No.

A0628

Observed MW

61kDa

Calculated MW

60kDa

Category

Primary antibody

Applications

WB, IHC

Cross-Reactivity

Human, Mouse

Recommended Dilutions

WB	1:500 - 1:1000
IHC	1:50 - 1:100

Contact

 | www.abclonal.com

Background

This gene is the cellular homolog of the Yamaguchi sarcoma virus oncogene. The encoded protein has tyrosine kinase activity and belongs to the src family of proteins. This gene lies in close proximity to thymidylate synthase gene on chromosome 18, and a corresponding pseudogene has been found on chromosome 22.

Immunogen Information

Gene ID	Swiss Prot
7525	P07947

Immunogen

Recombinant fusion protein containing a sequence corresponding to amino acids 1-250 of human YES1 (NP_005424.1).

Synonyms

YES1;HsT441;P61-YES;Yes;c-yes

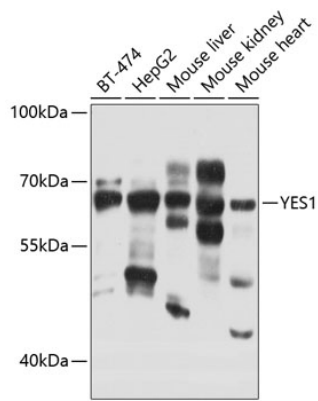
Product Information

Source	Isotype	Purification
Rabbit	IgG	Affinity purification

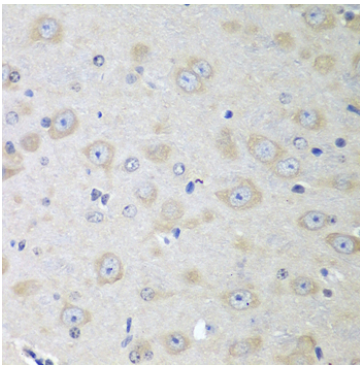
Storage

Store at -20°C. Avoid freeze / thaw cycles.
Buffer: PBS with 0.02% sodium azide, 50% glycerol, pH7.3.

Validation Data



Western blot analysis of extracts of various cell lines, using YES1 antibody (A0628) at 1:1000 dilution. Secondary antibody: HRP Goat Anti-Rabbit IgG (H+L) (AS014) at 1:10000 dilution. Lysates/proteins: 25ug per lane. Blocking buffer: 3% nonfat dry milk in TBST. Detection: ECL Basic Kit (RM00020). Exposure time: 20s.



Immunohistochemistry of paraffin-embedded mouse brain using YES1 antibody (A0628) at dilution of 1:100 (40x lens).