

# GAB2 Rabbit pAb

Catalog No.: A0619

## Basic Information

---

**Observed MW**

99kDa

**Calculated MW**

74kDa

**Category**

Primary antibody

**Applications**

WB,FC

**Cross-Reactivity**

Human

## Background

---

This gene is a member of the GRB2-associated binding protein (GAB) gene family. These proteins contain pleckstrin homology (PH) domain, and bind SHP2 tyrosine phosphatase and GRB2 adapter protein. They act as adapters for transmitting various signals in response to stimuli through cytokine and growth factor receptors, and T- and B-cell antigen receptors. The protein encoded by this gene is the principal activator of phosphatidylinositol-3 kinase in response to activation of the high affinity IgE receptor. Two alternatively spliced transcripts encoding different isoforms have been described for this gene.

## Recommended Dilutions

---

<b>WB</b>	1:500 - 1:1000
<b>FC</b>	1:20 - 1:50

## Immunogen Information

---

<b>Gene ID</b>	<b>Swiss Prot</b>
9846	Q9UQC2

**Immunogen**

A synthetic peptide of human GAB2

**Synonyms**

GAB2

## Contact

---

 | [www.abclonal.com](http://www.abclonal.com)

## Product Information

---

<b>Source</b>	<b>Isotype</b>	<b>Purification</b>
Rabbit	IgG	Affinity purification

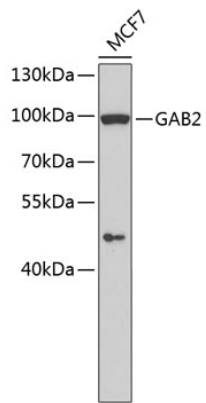
**Storage**

Store at 4°C. Avoid freeze / thaw cycles.

Buffer: PBS with 0.02% sodium azide,pH7.3.

## Validation Data

---



Western blot analysis of extracts of MCF-7 cells, using GAB2 antibody (A0619).  
Secondary antibody: HRP Goat Anti-Rabbit IgG (H+L) (AS014) at 1:10000 dilution.  
Lysates/proteins: 25µg per lane.  
Blocking buffer: 3% nonfat dry milk in TBST.