

A0607

Leader in Biomolecular Solutions for Life Science



## CFL1 Rabbit pAb

Catalog No.: A0607 **1 Publications**

### Basic Information

#### Observed MW

19kDa

#### Calculated MW

19kDa

#### Category

Mouse Monoclonal Antibody

#### Applications

WB,FC

#### Cross-Reactivity

Human,Mouse,Rat

#### Conjugate

Unconjugated

### Recommended Dilutions

WB 1:500 - 1:1000

FC 1:20 - 1:50

### Background

The protein encoded by this gene can polymerize and depolymerize F-actin and G-actin in a pH-dependent manner. Increased phosphorylation of this protein by LIM kinase aids in Rho-induced reorganization of the actin cytoskeleton. Cofilin is a widely distributed intracellular actin-modulating protein that binds and depolymerizes filamentous F-actin and inhibits the polymerization of monomeric G-actin in a pH-dependent manner. It is involved in the translocation of actin-cofilin complex from cytoplasm to nucleus.

### Immunogen Information

#### Gene ID

1072

#### Swiss Prot

P23528

#### Immunogen

A synthetic peptide of human CFL1

#### Synonyms

CFL; cofilin; HEL-S-15; CFL1

### Contact



[www.abclonal.com](http://www.abclonal.com)

### Product Information

#### Source

Rabbit

#### Isotype

IgG

#### Purification

Affinity purification

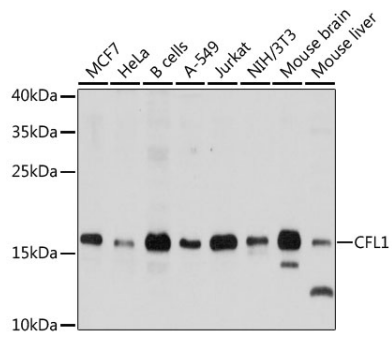
#### Storage

Store at 4°C. Avoid freeze / thaw cycles.

Buffer: PBS with 0.02% sodium azide,pH7.3.

## Validation Data

---



Western blot analysis of various lysates using CFL1 Rabbit pAb (A0607) at 1:1000 dilution.  
Secondary antibody: HRP Goat Anti-Rabbit IgG (H+L) (AS014) at 1:10000 dilution.  
Lysates/proteins: 25µg per lane.  
Blocking buffer: 3% nonfat dry milk in TBST.  
Detection: ECL Basic Kit (RM00020).  
Exposure time: 30s.