

# Smad6 Rabbit pAb

Catalog No.: A0579

## Basic Information

### Catalog No.

A0579

### Observed MW

48kDa

### Calculated MW

26kDa/35kDa/53kDa

### Category

Primary antibody

### Applications

WB

### Cross-Reactivity

Human, Mouse, Rat

## Recommended Dilutions

WB 1:500 - 1:1000

## Background

The protein encoded by this gene belongs to the SMAD family of proteins, which are related to *Drosophila* 'mothers against decapentaplegic' (Mad) and *C. elegans* Sma. SMAD proteins are signal transducers and transcriptional modulators that mediate multiple signaling pathways. This protein functions in the negative regulation of BMP and TGF-beta/activin-signalling. Multiple transcript variants have been found for this gene.

## Immunogen Information

### Gene ID

4091

### Swiss Prot

O43541

### Immunogen

Recombinant fusion protein containing a sequence corresponding to amino acids 257-496 of human Smad6 (NP\_005576.3).

### Synonyms

SMAD6;AOVD2;HsT17432;MADH6;MADH7

## Contact

 | [www.abclonal.com](http://www.abclonal.com)

## Product Information

### Source

Rabbit

### Isotype

IgG

### Purification

Affinity purification

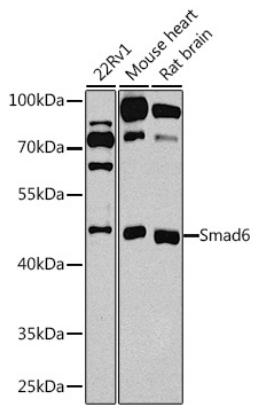
### Storage

Store at -20°C. Avoid freeze / thaw cycles.

Buffer: PBS with 0.02% sodium azide, 50% glycerol, pH7.3.

## Validation Data

---



Western blot analysis of extracts of various cell lines, using Smad6 antibody (A0579) at 1:1000 dilution.

Secondary antibody: HRP Goat Anti-Rabbit IgG (H+L) (AS014) at 1:10000 dilution.

Lysates/proteins: 25ug per lane.

Blocking buffer: 3% nonfat dry milk in TBST.

Detection: ECL Basic Kit (RM00020).

Exposure time: 15s.