

# PKN1 Rabbit pAb

**Catalog No.:** A0553

## Basic Information

**Catalog No.**

A0553

**Observed MW**

120kDa

**Calculated MW**

104kDa

**Category**

Primary antibody

**Applications**

WB, IHC

**Cross-Reactivity**

Human, Mouse, Rat

## Recommended Dilutions

<b>WB</b>	1:500 - 1:1000
<b>IHC</b>	1:50 - 1:100

## Background

The protein encoded by this gene belongs to the protein kinase C superfamily. This kinase is activated by Rho family of small G proteins and may mediate the Rho-dependent signaling pathway. This kinase can be activated by phospholipids and by limited proteolysis. The 3-phosphoinositide dependent protein kinase-1 (PDK1/PDK1) is reported to phosphorylate this kinase, which may mediate insulin signals to the actin cytoskeleton. The proteolytic activation of this kinase by caspase-3 or related proteases during apoptosis suggests its role in signal transduction related to apoptosis. Alternatively spliced transcript variants encoding distinct isoforms have been observed.

## Immunogen Information

<b>Gene ID</b>	<b>Swiss Prot</b>
5585	Q16512

**Immunogen**

Recombinant fusion protein containing a sequence corresponding to amino acids 1-300 of human PKN1 (NP\_002732.3).

**Synonyms**

PKN1;DBK;PAK-1;PAK1;PKN;PKN-ALPHA;PRK1;PRKCL1

## Contact

 | [www.abclonal.com](http://www.abclonal.com)

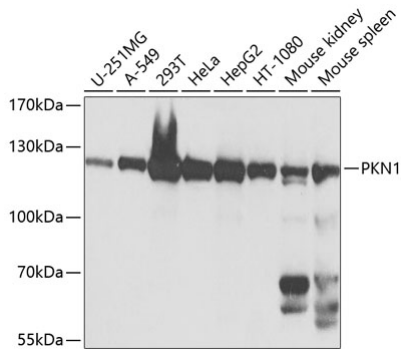
## Product Information

<b>Source</b>	<b>Isotype</b>	<b>Purification</b>
Rabbit	IgG	Affinity purification

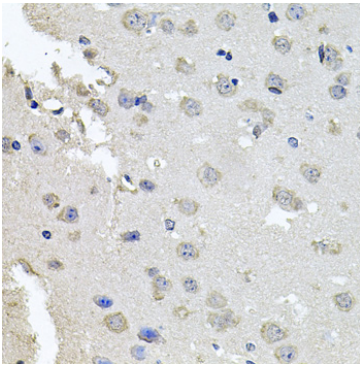
**Storage**

Store at -20°C. Avoid freeze / thaw cycles.  
Buffer: PBS with 0.02% sodium azide,50% glycerol,pH7.3.

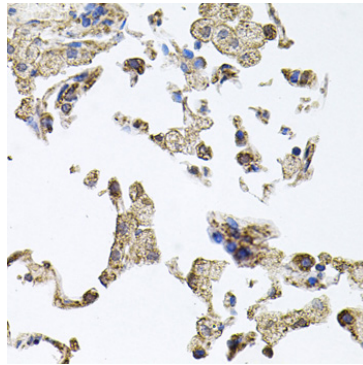
## Validation Data



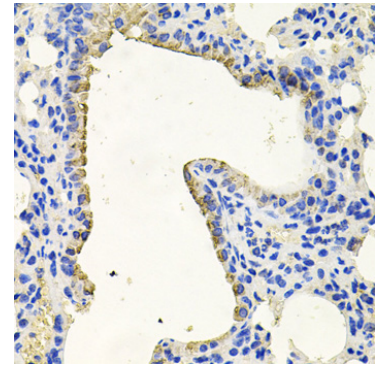
Western blot analysis of extracts of various cell lines, using PKN1 antibody (A0553) at 1:1000 dilution. Secondary antibody: HRP Goat Anti-Rabbit IgG (H+L) (AS014) at 1:10000 dilution. Lysates/proteins: 25ug per lane. Blocking buffer: 3% nonfat dry milk in TBST. Detection: ECL Basic Kit (RM00020). Exposure time: 5s.



Immunohistochemistry of paraffin-embedded mouse brain using PKN1 antibody (A0553) at dilution of 1:100 (40x lens).



Immunohistochemistry of paraffin-embedded human lung using PKN1 antibody (A0553) at dilution of 1:100 (40x lens).



Immunohistochemistry of paraffin-embedded mouse lung using PKN1 antibody (A0553) at dilution of 1:100 (40x lens).