

# TDP-43/TARDB Rabbit pAb

Catalog No.: A0538

## Basic Information

### Catalog No.

A0538

### Observed MW

43kDa

### Calculated MW

31kDa/44kDa

### Category

Primary antibody

### Applications

WB, IHC, IF

### Cross-Reactivity

Human, Mouse, Rat

## Recommended Dilutions

<b>WB</b>	1:500 - 1:2000
<b>IHC</b>	1:50 - 1:100
<b>IF</b>	1:50 - 1:100

## Contact

 | [www.abclonal.com](http://www.abclonal.com)

## Background

HIV-1, the causative agent of acquired immunodeficiency syndrome (AIDS), contains an RNA genome that produces a chromosomally integrated DNA during the replicative cycle. Activation of HIV-1 gene expression by the transactivator Tat is dependent on an RNA regulatory element (TAR) located downstream of the transcription initiation site. The protein encoded by this gene is a transcriptional repressor that binds to chromosomally integrated TAR DNA and represses HIV-1 transcription. In addition, this protein regulates alternate splicing of the CFTR gene. A similar pseudogene is present on chromosome 20.

## Immunogen Information

<b>Gene ID</b>	<b>Swiss Prot</b>
23435	Q13148

### Immunogen

A synthetic peptide of human TDP-43/TARDB

### Synonyms

ALS10;TDP-43;TARDBP;TDP43

## Product Information

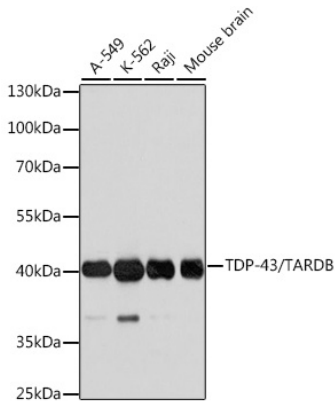
<b>Source</b>	<b>Isotype</b>	<b>Purification</b>
Rabbit	IgG	Affinity purification

### Storage

Store at -20°C. Avoid freeze / thaw cycles.

Buffer: PBS with 0.02% sodium azide, 50% glycerol, pH7.3.

## Validation Data



Western blot analysis of extracts of various cell lines, using TDP-43/TARDB antibody (A0538) at 1:1000 dilution.

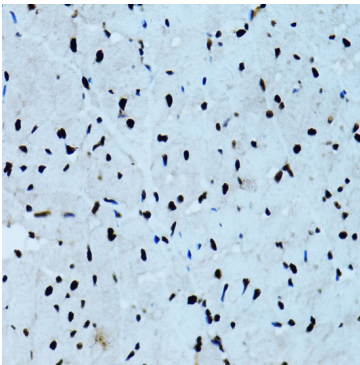
Secondary antibody: HRP Goat Anti-Rabbit IgG (H+L) (AS014) at 1:10000 dilution.

Lysates/proteins: 25ug per lane.

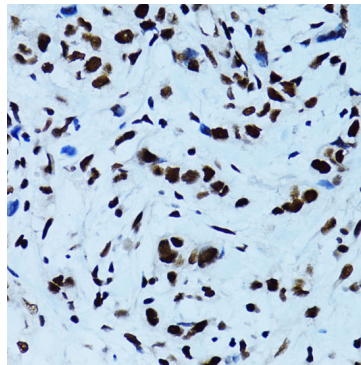
Blocking buffer: 3% nonfat dry milk in TBST.

Detection: ECL Basic Kit (RM00020).

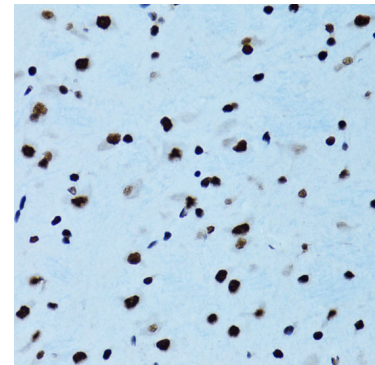
Exposure time: 1s.



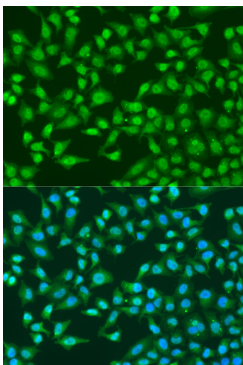
Immunohistochemistry of paraffin-embedded rat heart using TDP-43/TARDB antibody (A0538) at dilution of 1:100 (40x lens).



Immunohistochemistry of paraffin-embedded human breast cancer using TDP-43/TARDB antibody (A0538) at dilution of 1:100 (40x lens).



Immunohistochemistry of paraffin-embedded mouse brain using TDP-43/TARDB antibody (A0538) at dilution of 1:100 (40x lens).



Immunofluorescence analysis of U2OS cells using TDP-43/TARDB antibody (A0538) at dilution of 1:100. Blue: DAPI for nuclear staining.