

# NUMA1 Rabbit pAb

Catalog No.: A0527

## Basic Information

### Catalog No.

A0527

### Observed MW

238kDa

### Calculated MW

109kDa/200kDa/201kDa/236kDa/238kDa

### Category

Primary antibody

### Applications

WB, IHC, IF

### Cross-Reactivity

Human, Mouse, Rat

## Recommended Dilutions

**WB** 1:200 - 1:1000

**IHC** 1:50 - 1:100

**IF** 1:50 - 1:100

## Background

This gene encodes a large protein that forms a structural component of the nuclear matrix. The encoded protein interacts with microtubules and plays a role in the formation and organization of the mitotic spindle during cell division. Chromosomal translocation of this gene with the RARA (retinoic acid receptor, alpha) gene on chromosome 17 have been detected in patients with acute promyelocytic leukemia. Alternative splicing results in multiple transcript variants.

## Immunogen Information

### Gene ID

4926

### Swiss Prot

Q14980

### Immunogen

Recombinant fusion protein containing a sequence corresponding to amino acids 1-309 of human NUMA1 (NP\_006176.2).

### Synonyms

NUMA1;NMP-22;NUMA

## Contact

 | [www.abclonal.com](http://www.abclonal.com)

## Product Information

### Source

Rabbit

### Isotype

IgG

### Purification

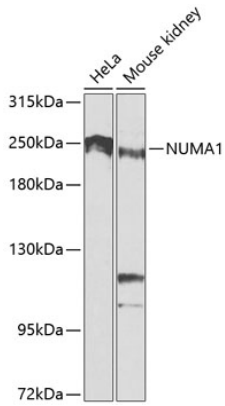
Affinity purification

### Storage

Store at -20°C. Avoid freeze / thaw cycles.

Buffer: PBS with 0.02% sodium azide,50% glycerol,pH7.3.

## Validation Data



Western blot analysis of extracts of various cell lines, using NUMA1 antibody (A0527) at 1:1000 dilution.

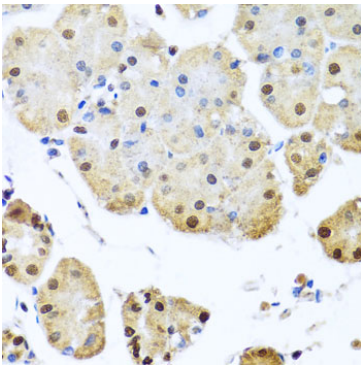
Secondary antibody: HRP Goat Anti-Rabbit IgG (H+L) (AS014) at 1:10000 dilution.

Lysates/proteins: 25ug per lane.

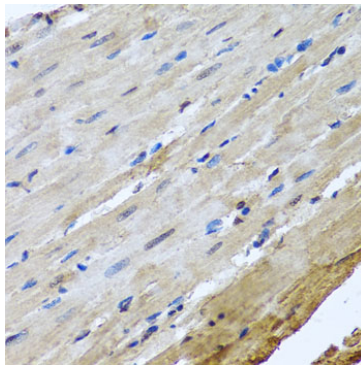
Blocking buffer: 3% nonfat dry milk in TBST.

Detection: ECL Basic Kit (RM00020).

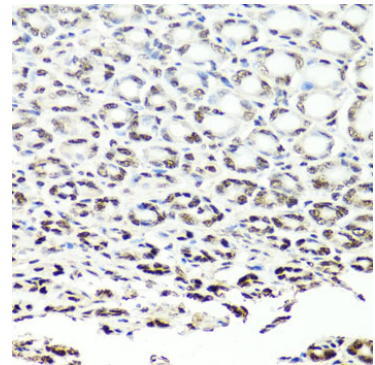
Exposure time: 90s.



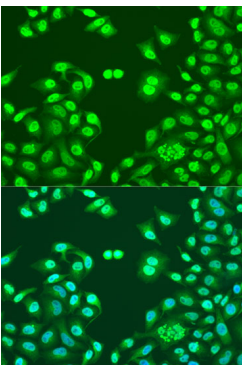
Immunohistochemistry of paraffin-embedded human stomach using NUMA1 antibody (A0527) at dilution of 1:100 (40x lens).



Immunohistochemistry of paraffin-embedded rat heart using NUMA1 antibody (A0527) at dilution of 1:100 (40x lens).



Immunohistochemistry of paraffin-embedded mouse stomach using NUMA1 antibody (A0527) at dilution of 1:100 (40x lens).



Immunofluorescence analysis of U2OS cells using NUMA1 antibody (A0527) at dilution of 1:100. Blue: DAPI for nuclear staining.