

# GATA1 Rabbit pAb

Catalog No.: A0475 **1 Publications**

## Basic Information

### Catalog No.

A0475

### Observed MW

50kDa

### Calculated MW

34kDa/35kDa/42kDa

### Category

Primary antibody

### Applications

WB, IHC, IF

### Cross-Reactivity

Human, Mouse, Rat

## Background

This gene encodes a protein which belongs to the GATA family of transcription factors. The protein plays an important role in erythroid development by regulating the switch of fetal hemoglobin to adult hemoglobin. Mutations in this gene have been associated with X-linked dyserythropoietic anemia and thrombocytopenia.

## Recommended Dilutions

<b>WB</b>	1:500 - 1:2000
<b>IHC</b>	1:50 - 1:200
<b>IF</b>	1:50 - 1:100

## Immunogen Information

### Gene ID

2623

### Swiss Prot

P15976

### Immunogen

A synthetic peptide of human GATA1

### Synonyms

GATA1; ERYF1; GATA-1; GF-1; GF1; NF-E1; NFE1; XLANP; XLTDA; XLTT

## Contact

 | [www.abclonal.com](http://www.abclonal.com)

## Product Information

### Source

Rabbit

### Isotype

IgG

### Purification

Affinity purification

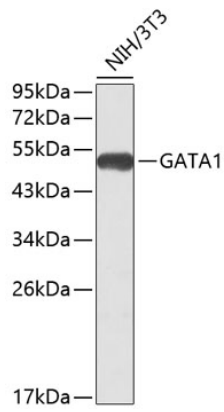
### Storage

Store at -20°C. Avoid freeze / thaw cycles.

Buffer: PBS with 0.02% sodium azide, 50% glycerol, pH7.3.

## Validation Data

---



Western blot analysis of extracts of NIH/3T3 cells, using GATA1 antibody (A0475).  
Secondary antibody: HRP Goat Anti-Rabbit IgG (H+L) (AS014) at 1:10000 dilution.  
Lysates/proteins: 25ug per lane.  
Blocking buffer: 3% nonfat dry milk in TBST.