

[KO Validated] N-Cadherin Rabbit pAb

Catalog No.: A0432 **KO** **Validated** **3 Publications**

Basic Information

Catalog No.

A0432

Observed MW

120kDa

Calculated MW

97kDa/99kDa

Category

Primary antibody

Applications

WB, IHC, IF

Cross-Reactivity

Human, Mouse, Rat

Background

This gene encodes a classical cadherin and member of the cadherin superfamily. Alternative splicing results in multiple transcript variants, at least one of which encodes a preproprotein is proteolytically processed to generate a calcium-dependent cell adhesion molecule and glycoprotein. This protein plays a role in the establishment of left-right asymmetry, development of the nervous system and the formation of cartilage and bone.

Recommended Dilutions

WB	1:500 - 1:2000
IHC	1:50 - 1:200
IF	1:50 - 1:200

Immunogen Information

Gene ID	Swiss Prot
1000	P19022

Immunogen

A synthetic peptide corresponding to a sequence within amino acids 450-550 of human N-Cadherin (NP_001783.2).

Synonyms

CD325;CDHN;CDw325;NCAD;N Cadherin;CDH2

Contact

 | www.abclonal.com

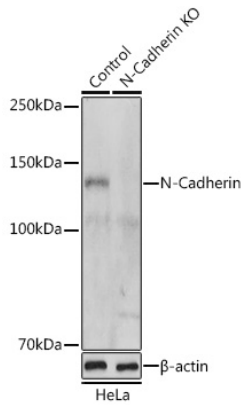
Product Information

Source	Isotype	Purification
Rabbit	IgG	Affinity purification

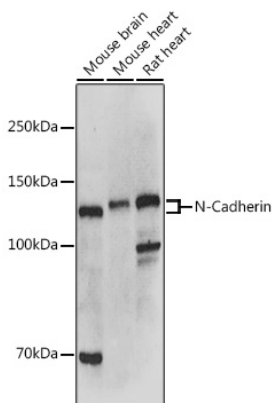
Storage

Store at -20°C. Avoid freeze / thaw cycles.
Buffer: PBS with 0.02% sodium azide, 50% glycerol, pH7.3.

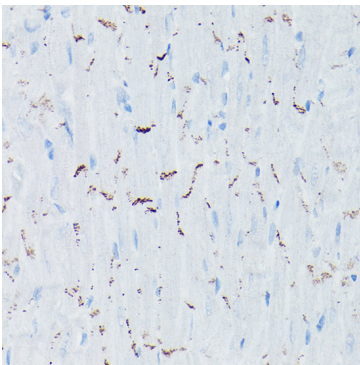
Validation Data



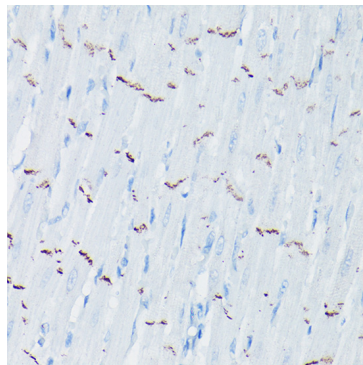
Western blot analysis of extracts from normal (control) and N-Cadherin knockout (KO) HeLa cells, using N-Cadherin antibody (A0432) at 1:500 dilution.
Secondary antibody: HRP Goat Anti-Rabbit IgG (H+L) (AS014) at 1:10000 dilution.
Lysates/proteins: 25ug per lane.
Blocking buffer: 3% nonfat dry milk in TBST.
Detection: ECL Basic Kit (RM00020).
Exposure time: 1s.



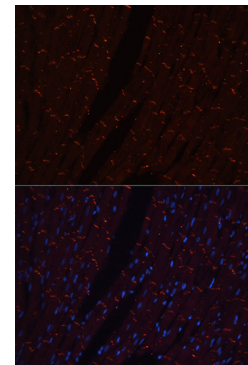
Western blot analysis of extracts of various cell lines, using N-Cadherin antibody (A0432) at 1:500 dilution.
Secondary antibody: HRP Goat Anti-Rabbit IgG (H+L) (AS014) at 1:10000 dilution.
Lysates/proteins: 25ug per lane.
Blocking buffer: 3% nonfat dry milk in TBST.
Detection: ECL Basic Kit (RM00020).
Exposure time: 1s.



Immunohistochemistry of paraffin-embedded mouse heart using N-Cadherin Rabbit pAb (A0432) at dilution of 1:50 (40x lens).

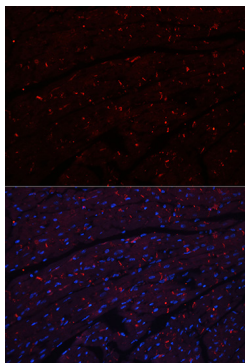


Immunohistochemistry of paraffin-embedded rat heart using N-Cadherin Rabbit pAb (A0432) at dilution of 1:50 (40x lens).



Immunofluorescence analysis of rat heart using N-Cadherin antibody (A0432). Blue: DAPI for nuclear staining.

Validation Data



Immunofluorescence analysis of mouse heart using N-Cadherin antibody (A0432).
Blue: DAPI for nuclear staining.