

Glucokinase (GCK) Rabbit pAb

Catalog No.: A0431

Basic Information

Catalog No.

A0431

Observed MW

Refer to figures

Calculated MW

52kDa

Category

Primary antibody

Applications

WB, IHC, IF

Cross-Reactivity

Human, Mouse, Rat

Recommended Dilutions

WB	1:200 - 1:1000
IHC	1:50 - 1:200
IF	1:50 - 1:200

Contact

 | www.abclonal.com

Background

Hexokinases phosphorylate glucose to produce glucose-6-phosphate, the first step in most glucose metabolism pathways. Alternative splicing of this gene results in three tissue-specific forms of glucokinase, one found in pancreatic islet beta cells and two found in liver. The protein localizes to the outer membrane of mitochondria. In contrast to other forms of hexokinase, this enzyme is not inhibited by its product glucose-6-phosphate but remains active while glucose is abundant. Mutations in this gene have been associated with non-insulin dependent diabetes mellitus (NIDDM), maturity onset diabetes of the young, type 2 (MODY2) and persistent hyperinsulinemic hypoglycemia of infancy (PHHI).

Immunogen Information

Gene ID	Swiss Prot
2645	P35557

Immunogen

Recombinant fusion protein containing a sequence corresponding to amino acids 1-300 of human Glucokinase (Glucokinase (GCK)) (NP_000153.1).

Synonyms

GCK;FGQTL3;GK;GLK;HHF3;HK4;HKIV;HXKP;LGLK;MODY2

Product Information

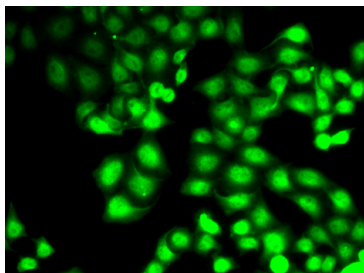
Source	Isotype	Purification
Rabbit	IgG	Affinity purification

Storage

Store at -20°C. Avoid freeze / thaw cycles.

Buffer: PBS with 0.02% sodium azide,50% glycerol,pH7.3.

Validation Data



Immunofluorescence analysis of HeLa cells using Glucokinase (Glucokinase (GCK)) antibody (A0431).