

A0427

Leader in Biomolecular Solutions for Life Science



Smad3 Rabbit pAb

Catalog No.: A0427 **1 Publications**

Basic Information

Observed MW

58kDa

Calculated MW

48kDa

Category

Mouse Monoclonal Antibody

Applications

WB

Cross-Reactivity

Human

Background

The SMAD family of proteins are a group of intracellular signal transducer proteins similar to the gene products of the Drosophila gene 'mothers against decapentaplegic' (Mad) and the C. elegans gene Sma. The SMAD3 protein functions in the transforming growth factor-beta signaling pathway, and transmits signals from the cell surface to the nucleus, regulating gene activity and cell proliferation. This protein forms a complex with other SMAD proteins and binds DNA, functioning both as a transcription factor and tumor suppressor. Mutations in this gene are associated with aneurysms-osteoarthritis syndrome and Loeyes-Dietz Syndrome 3.

Recommended Dilutions

WB 1:500 - 1:1000

Immunogen Information

Gene ID

4088

Swiss Prot

P84022

Immunogen

A synthetic peptide of human Smad3

Synonyms

LDS3; mad3; LDS1C; MADH3; JV15-2; hMAD-3; hSMAD3; HSPC193; HsT17436; Smad3

Contact



www.abclonal.com

Product Information

Source

Rabbit

Isotype

IgG

Purification

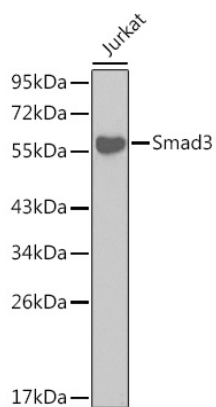
Affinity purification

Storage

Store at -20°C. Avoid freeze / thaw cycles.

Buffer: PBS with 0.02% sodium azide, 50% glycerol, pH 7.3.

Validation Data



Western blot analysis of extracts of Jurkat cells, using Smad3 antibody (A0427).
Secondary antibody: HRP Goat Anti-Rabbit IgG (H+L) (AS014) at 1:10000 dilution.
Lysates/proteins: 25 μ g per lane.
Blocking buffer: 3% nonfat dry milk in TBST.