

Cytokeratin 13 (KRT13) Rabbit mAb

Catalog No.: A0411 **Recombinant**

Basic Information

Catalog No.

A0411

Observed MW

50kDa

Calculated MW

50kDa

Category

Primary antibody

Applications

WB,IHC,IF

Cross-Reactivity

Human, Mouse, Rat

Recommended Dilutions

WB	1:500 - 1:2000
IHC	1:50 - 1:200
IF	1:50 - 1:200

Contact

 | www.abclonal.com

Background

The protein encoded by this gene is a member of the keratin gene family. The keratins are intermediate filament proteins responsible for the structural integrity of epithelial cells and are subdivided into cytokeratins and hair keratins. Most of the type I cytokeratins consist of acidic proteins which are arranged in pairs of heterotypic keratin chains. This type I cytokeratin is paired with keratin 4 and expressed in the suprabasal layers of non-cornified stratified epithelia. Mutations in this gene and keratin 4 have been associated with the autosomal dominant disorder White Sponge Nevus. The type I cytokeratins are clustered in a region of chromosome 17q21.2. Alternative splicing of this gene results in multiple transcript variants; however, not all variants have been described. [provided by RefSeq, Jul 2008]

Immunogen Information

Gene ID	Swiss Prot
3860	P13646

Immunogen

A synthesized peptide derived from human Cytokeratin 13 (KRT13) (KRT13)

Synonyms

CK13; K13; WSN2

Product Information

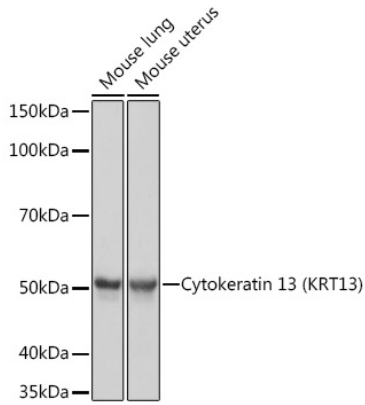
Source	Isotype	Purification
Rabbit	IgG	Affinity purification

Storage

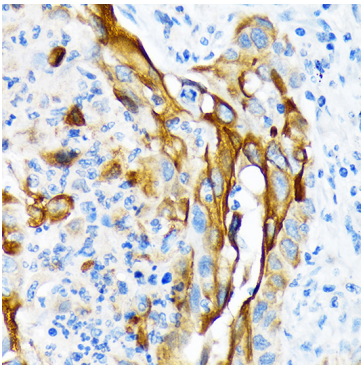
Store at -20°C. Avoid freeze / thaw cycles.

Buffer: PBS with 0.02% sodium azide,0.05% BSA,50% glycerol,pH7.3.

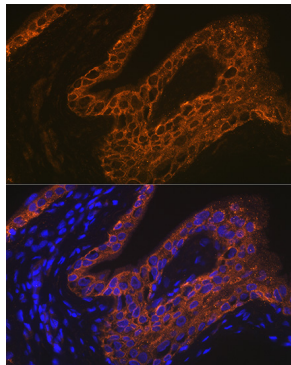
Validation Data



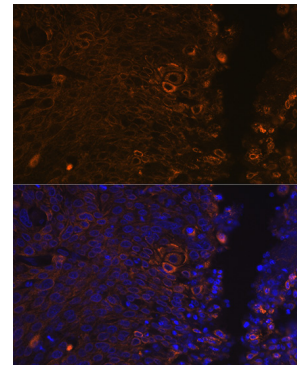
Western blot analysis of extracts of various cell lines, using Cytokeratin 13 (KRT13) (KRT13) Rabbit mAb (A0411) at 1:1000 dilution. Secondary antibody: HRP Goat Anti-Rabbit IgG (H+L) (AS014) at 1:10000 dilution. Lysates/proteins: 25ug per lane. Blocking buffer: 3% nonfat dry milk in TBST. Detection: ECL Basic Kit (RM00020). Exposure time: 1s.



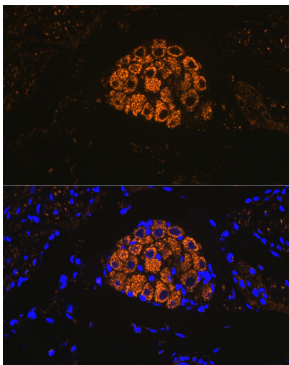
Immunohistochemistry of paraffin-embedded human lung squamous carcinoma tissue using Cytokeratin 13 (KRT13) (KRT13) Rabbit mAb (A0411) at dilution of 1:100 (40x lens).



Immunofluorescence analysis of rat bladder using Cytokeratin 13 (KRT13) (KRT13) Rabbit mAb (A0411) at dilution of 1:100 (40x lens). Blue: DAPI for nuclear staining.



Immunofluorescence analysis of human cervix cancer using Cytokeratin 13 (KRT13) (KRT13) Rabbit mAb (A0411) at dilution of 1:100 (40x lens). Blue: DAPI for nuclear staining.



Immunofluorescence analysis of mouse bladder using Cytokeratin 13 (KRT13) (KRT13) Rabbit mAb (A0411) at dilution of 1:100 (40x lens). Blue: DAPI for nuclear staining.