

MDM2 Rabbit pAb

Catalog No.: A0345 **3 Publications**

Basic Information

Catalog No.

A0345

Observed MW

50kDa

Calculated MW

11-14kDa/24-55kDa

Category

Primary antibody

Applications

WB, IHC, IF

Cross-Reactivity

Human, Mouse, Rat

Recommended Dilutions

WB	1:500 - 1:2000
IHC	1:50 - 1:200
IF	1:50 - 1:200

Contact

 | www.abclonal.com

Background

This gene encodes a nuclear-localized E3 ubiquitin ligase. The encoded protein can promote tumor formation by targeting tumor suppressor proteins, such as p53, for proteasomal degradation. This gene is itself transcriptionally-regulated by p53. Overexpression or amplification of this locus is detected in a variety of different cancers. There is a pseudogene for this gene on chromosome 2. Alternative splicing results in a multitude of transcript variants, many of which may be expressed only in tumor cells.

Immunogen Information

Gene ID	Swiss Prot
4193	Q00987

Immunogen

A synthetic peptide corresponding to a sequence within amino acids 130-230 of human MDM2 (NP_002383.2).

Synonyms

MDM2;ACTFS;HDMX;hdm2

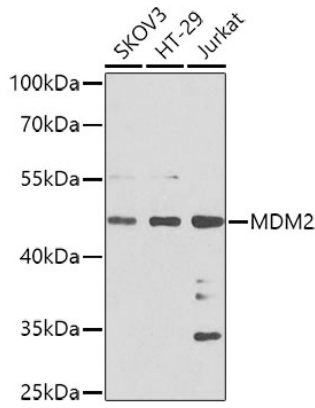
Product Information

Source	Isotype	Purification
Rabbit	IgG	Affinity purification

Storage

Store at -20°C. Avoid freeze / thaw cycles.
Buffer: PBS with 0.02% sodium azide, 50% glycerol, pH7.3.

Validation Data



Western blot analysis of extracts of various cell lines, using MDM2 antibody (A0345) at 1:1000 dilution.

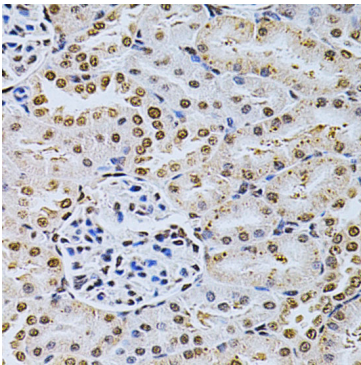
Secondary antibody: HRP Goat Anti-Rabbit IgG (H+L) (AS014) at 1:10000 dilution.

Lysates/proteins: 25ug per lane.

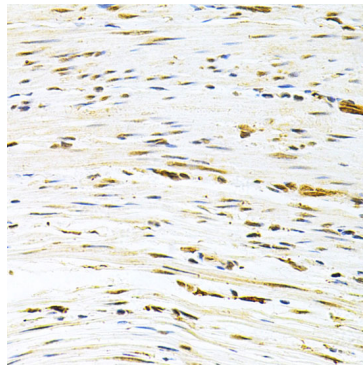
Blocking buffer: 3% nonfat dry milk in TBST.

Detection: ECL Basic Kit (RM00020).

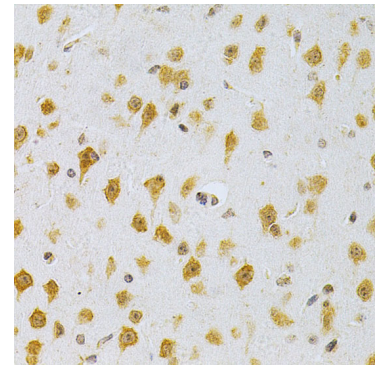
Exposure time: 90s.



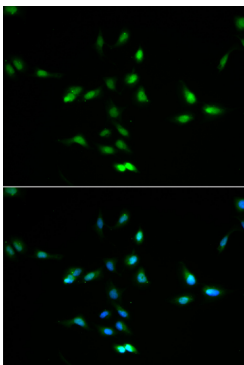
Immunohistochemistry of paraffin-embedded rat kidney using MDM2 Antibody (A0345) at dilution of 1:200 (40x lens).



Immunohistochemistry of paraffin-embedded human colon carcinoma using MDM2 Antibody (A0345) at dilution of 1:200 (40x lens).



Immunohistochemistry of paraffin-embedded mouse brain using MDM2 Antibody (A0345) at dilution of 1:200 (40x lens).



Immunofluorescence analysis of A549 cells using MDM2 antibody (A0345). Blue: DAPI for nuclear staining.