

# PBRM1 Rabbit mAb

Catalog No.: A0334 **Recombinant**

## Basic Information

---

**Catalog No.**

A0334

**Observed MW**

220kDa

**Calculated MW**

193kDa

**Category**

Primary antibody

**Applications**

WB,IHC

**Cross-Reactivity**

Human, Mouse, Rat

## Recommended Dilutions

---

**WB** 1:500 - 1:2000

**IHC** 1:50 - 1:200

## Background

---

This locus encodes a subunit of ATP-dependent chromatin-remodeling complexes. The encoded protein has been identified as an integral component of complexes necessary for ligand-dependent transcriptional activation by nuclear hormone receptors. Mutations at this locus have been associated with primary clear cell renal cell carcinoma. [provided by RefSeq, Feb 2012]

## Immunogen Information

---

**Gene ID**

55193

**Swiss Prot**

Q86U86

**Immunogen**

A synthesized peptide derived from human PBRM1

**Synonyms**

BAF180; PB1

## Contact

---

 | [www.abclonal.com](http://www.abclonal.com)

## Product Information

---

**Source**

Rabbit

**Isotype**

IgG

**Purification**

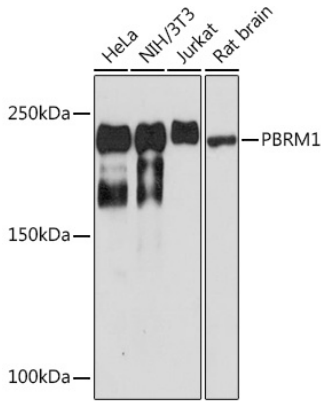
Affinity purification

**Storage**

Store at -20°C. Avoid freeze / thaw cycles.

Buffer: PBS with 0.02% sodium azide, 0.05% BSA, 50% glycerol, pH7.3.

## Validation Data



Western blot analysis of extracts of various cell lines, using PBRM1 Rabbit mAb (A0334) at 1:1000 dilution.

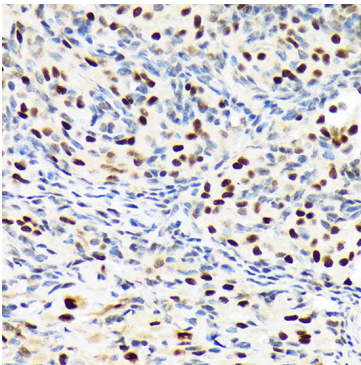
Secondary antibody: HRP Goat Anti-Rabbit IgG (H+L) (A5014) at 1:10000 dilution.

Lysates/proteins: 25ug per lane.

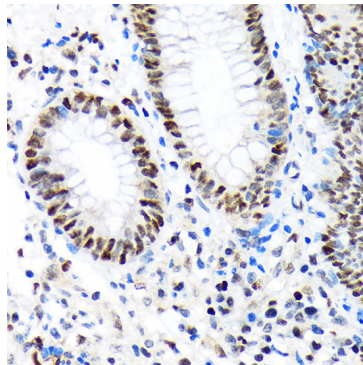
Blocking buffer: 3% nonfat dry milk in TBST.

Detection: ECL Basic Kit (RM00020).

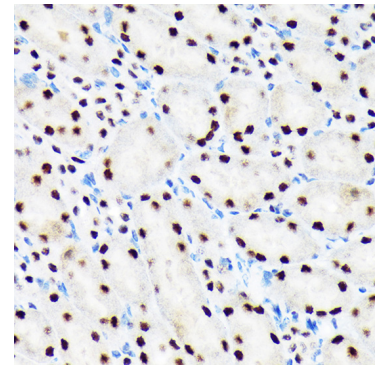
Exposure time: 3min.



Immunohistochemistry of paraffin-embedded rat ovary using PBRM1 Rabbit mAb (A0334) at dilution of 1:100 (40x lens).



Immunohistochemistry of paraffin-embedded human appendix using PBRM1 Rabbit mAb (A0334) at dilution of 1:100 (40x lens).



Immunohistochemistry of paraffin-embedded mouse kidney using PBRM1 Rabbit mAb (A0334) at dilution of 1:100 (40x lens).