

# IL2 Rabbit pAb

**Catalog No.:** A0302

## Basic Information

**Catalog No.**

A0302

**Observed MW**

15-20KDa

**Calculated MW**

17kDa

**Category**

Primary antibody

**Applications**

WB, IHC

**Cross-Reactivity**

Human

## Recommended Dilutions

<b>WB</b>	1:500 - 1:2000
<b>IHC</b>	1:50 - 1:100

## Contact

 | [www.abclonal.com](http://www.abclonal.com)

## Background

The protein encoded by this gene is a secreted cytokine that is important for the proliferation of T and B lymphocytes. The receptor of this cytokine is a heterotrimeric protein complex whose gamma chain is also shared by interleukin 4 (IL4) and interleukin 7 (IL7). The expression of this gene in mature thymocytes is monoallelic, which represents an unusual regulatory mode for controlling the precise expression of a single gene. The targeted disruption of a similar gene in mice leads to ulcerative colitis-like disease, which suggests an essential role of this gene in the immune response to antigenic stimuli.

## Immunogen Information

<b>Gene ID</b>	<b>Swiss Prot</b>
3558	P60568

**Immunogen**

Recombinant fusion protein containing a sequence corresponding to amino acids 21-153 of human IL2 (NP\_000577.2).

**Synonyms**

IL2;IL-2;TCGF;lymphokine

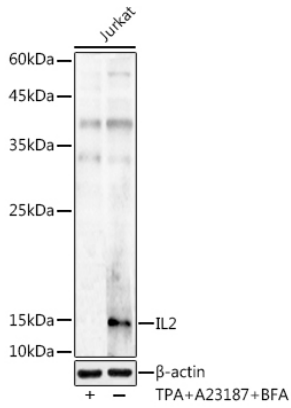
## Product Information

<b>Source</b>	<b>Isotype</b>	<b>Purification</b>
Rabbit	IgG	Affinity purification

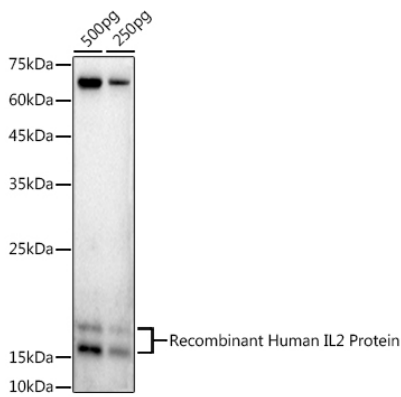
**Storage**

Store at -20°C. Avoid freeze / thaw cycles.  
Buffer: PBS with 0.02% sodium azide,50% glycerol,pH7.3.

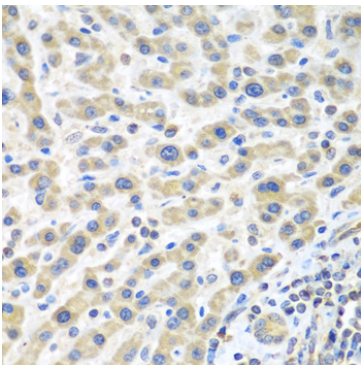
## Validation Data



Western blot analysis of extracts of Jurkat cells, using IL2 antibody (A0302) at 1:1000 dilution. Jurkat cells were treated by TPA (40 nM), A23187 (2 $\mu$ M) and Brefeldin A (300 ng / ml) for 0-24 hours. Secondary antibody: HRP Goat Anti-Rabbit IgG (H+L) (AS014) at 1:10000 dilution. Lysates/proteins: 25ug per lane. Blocking buffer: 3% nonfat dry milk in TBST. Detection: ECL Enhanced Kit (RM00021). Exposure time: 180s.



Western blot analysis of extracts of Recombinant Human IL2 Protein, using IL2 antibody (A0302) at 1:1000 dilution. Secondary antibody: HRP Goat Anti-Rabbit IgG (H+L) (AS014) at 1:10000 dilution. Lysates/proteins: 25ug per lane. Blocking buffer: 3% nonfat dry milk in TBST. Detection: ECL Enhanced Kit (RM00021). Exposure time: 180s.



Immunohistochemistry of paraffin-embedded human liver cancer using IL2 antibody (A0302) at dilution of 1:100 (40x lens).