

# JNK1 Rabbit pAb

Catalog No.: A0288 **13 Publications**

## Basic Information

**Catalog No.**

A0288

**Observed MW**

44kDa

**Calculated MW**

35kDa/44kDa/48kDa

**Category**

Primary antibody

**Applications**

WB, IHC, IF

**Cross-Reactivity**

Human, Mouse, Rat

## Recommended Dilutions

<b>WB</b>	1:500 - 1:2000
<b>IHC</b>	1:100 - 1:200
<b>IF</b>	1:50 - 1:200

## Contact

 | [www.abclonal.com](http://www.abclonal.com)

## Background

The protein encoded by this gene is a member of the MAP kinase family. MAP kinases act as an integration point for multiple biochemical signals, and are involved in a wide variety of cellular processes such as proliferation, differentiation, transcription regulation and development. This kinase is activated by various cell stimuli, and targets specific transcription factors, and thus mediates immediate-early gene expression in response to cell stimuli. The activation of this kinase by tumor-necrosis factor alpha (TNF-alpha) is found to be required for TNF-alpha induced apoptosis. This kinase is also involved in UV radiation induced apoptosis, which is thought to be related to cytochrom c-mediated cell death pathway. Studies of the mouse counterpart of this gene suggested that this kinase play a key role in T cell proliferation, apoptosis and differentiation. Several alternatively spliced transcript variants encoding distinct isoforms have been reported.

## Immunogen Information

**Gene ID**

5599

**Swiss Prot**

P45983

**Immunogen**

Recombinant fusion protein containing a sequence corresponding to amino acids 245-345 of human JNK1 (NP\_620635.1).

**Synonyms**

MAPK8;JNK;JNK-46;JNK1;JNK1A2;JNK21B1/2;PRKM8;SAPK1;SAPK1c

## Product Information

**Source**

Rabbit

**Isotype**

IgG

**Purification**

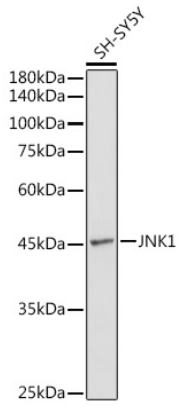
Affinity purification

**Storage**

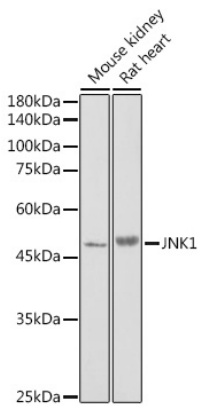
Store at -20°C. Avoid freeze / thaw cycles.

Buffer: PBS with 0.02% sodium azide,50% glycerol,pH7.3.

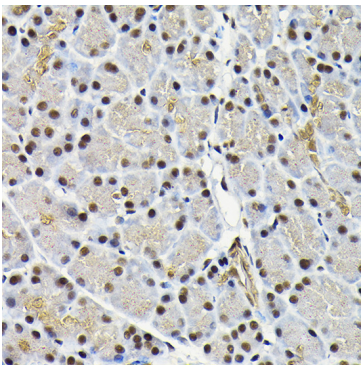
## Validation Data



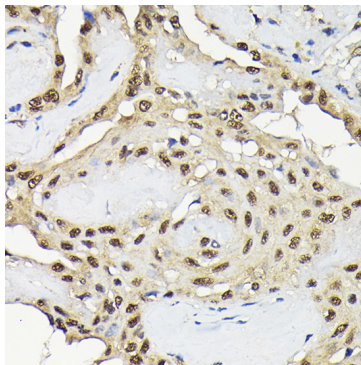
Western blot analysis of extracts of SH-SY5Y cells, using JNK1 antibody (A0288) at 1:1000 dilution.  
Secondary antibody: HRP Goat Anti-Rabbit IgG (H+L) (A5014) at 1:10000 dilution.  
Lysates/proteins: 25ug per lane.  
Blocking buffer: 3% nonfat dry milk in TBST.  
Detection: ECL Basic Kit (RM00020).  
Exposure time: 90s.



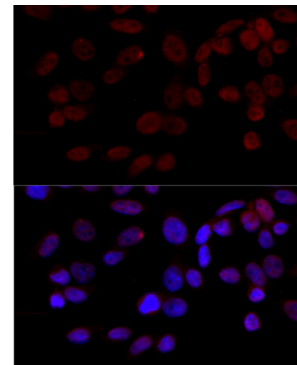
Western blot analysis of extracts of various cell lines, using JNK1 antibody (A0288) at 1:1000 dilution.  
Secondary antibody: HRP Goat Anti-Rabbit IgG (H+L) (A5014) at 1:10000 dilution.  
Lysates/proteins: 25ug per lane.  
Blocking buffer: 3% nonfat dry milk in TBST.  
Detection: ECL Enhanced Kit (RM00021).  
Exposure time: 180s.



Immunohistochemistry of paraffin-embedded rat pancreas using JNK1 Rabbit pAb (A0288) at dilution of 1:100 (40x lens).



Immunohistochemistry of paraffin-embedded human thyroid cancer using JNK1 Rabbit pAb (A0288) at dilution of 1:100 (40x lens).



Immunofluorescence analysis of HeLa cells using JNK1 antibody (A0288) at dilution of 1:100 (40x lens). Blue: DAPI for nuclear staining.