

# Insulin Receptor Rabbit pAb

Catalog No.: A0287 **1 Publications**

## Basic Information

**Catalog No.**

A0287

**Observed MW**

95kDa/220kDa

**Calculated MW**

155kDa/156kDa

**Category**

Primary antibody

**Applications**

WB, IHC

**Cross-Reactivity**

Human, Mouse

## Recommended Dilutions

<b>WB</b>	1:500 - 1:2000
<b>IHC</b>	1:50 - 1:100

## Contact

 | [www.abclonal.com](http://www.abclonal.com)

## Background

This gene encodes a member of the receptor tyrosine kinase family of proteins. The encoded preproprotein is proteolytically processed to generate alpha and beta subunits that form a heterotetrameric receptor. Binding of insulin or other ligands to this receptor activates the insulin signaling pathway, which regulates glucose uptake and release, as well as the synthesis and storage of carbohydrates, lipids and protein. Mutations in this gene underlie the inherited severe insulin resistance syndromes including type A insulin resistance syndrome, Donohue syndrome and Rabson-Mendenhall syndrome. Alternative splicing results in multiple transcript variants.

## Immunogen Information

<b>Gene ID</b>	<b>Swiss Prot</b>
3643	P06213

**Immunogen**

A synthetic peptide corresponding to a sequence within amino acids 1130-1230 of human Insulin Receptor (NP\_000199.2).

**Synonyms**

CD220;HHF5;INSR

## Product Information

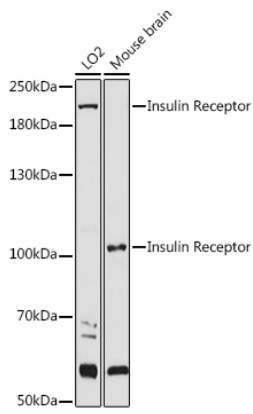
<b>Source</b>	<b>Isotype</b>	<b>Purification</b>
Rabbit	IgG	Affinity purification

**Storage**

Store at -20°C. Avoid freeze / thaw cycles.  
Buffer: PBS with 0.02% sodium azide, 50% glycerol, pH7.3.

## Validation Data

---



Western blot analysis of extracts of various cell lines, using Insulin Receptor antibody (A0287) at 1:1000 dilution.

Secondary antibody: HRP Goat Anti-Rabbit IgG (H+L) (AS014) at 1:10000 dilution.

Lysates/proteins: 25ug per lane.

Blocking buffer: 3% nonfat dry milk in TBST.

Detection: ECL Basic Kit (RM00020).

Exposure time: 90s.