

VCAM1 Rabbit pAb

Catalog No.: A0279 **10 Publications**

Basic Information

Catalog No.

A0279

Observed MW

100-120kDa

Calculated MW

71kDa/74kDa/81kDa

Category

Primary antibody

Applications

WB, IHC, IP

Cross-Reactivity

Human, Mouse, Rat

Recommended Dilutions

| | |
|------------|-----------------|
| WB | 1:1000 - 1:3000 |
| IHC | 1:50 - 1:200 |
| IP | 1:50 - 1:200 |

Contact

 | www.abclonal.com

Background

This gene is a member of the Ig superfamily and encodes a cell surface sialoglycoprotein expressed by cytokine-activated endothelium. This type I membrane protein mediates leukocyte-endothelial cell adhesion and signal transduction, and may play a role in the development of atherosclerosis and rheumatoid arthritis. Three alternatively spliced transcripts encoding different isoforms have been described for this gene.

Immunogen Information

| | |
|----------------|-------------------|
| Gene ID | Swiss Prot |
| 7412 | P19320 |

Immunogen

A synthetic peptide corresponding to a sequence within amino acids 300-400 of human VCAM1 (NP_001069.1).

Synonyms

CD106;INCAM-100;VCAM1

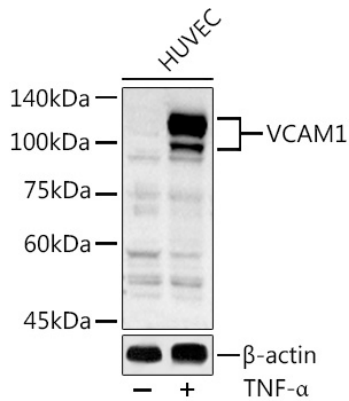
Product Information

| | | |
|---------------|----------------|-----------------------|
| Source | Isotype | Purification |
| Rabbit | IgG | Affinity purification |

Storage

Store at -20°C. Avoid freeze / thaw cycles.
Buffer: PBS with 0.02% sodium azide, 50% glycerol, pH7.3.

Validation Data



Western blot analysis of extracts of HUVEC cells, using VCAM1 antibody (A0279) at 1:1000 dilution. HUVEC cells were treated by TNF- α (20 ng/ml) at 37°C for 30 minutes after serum-starvation overnight.

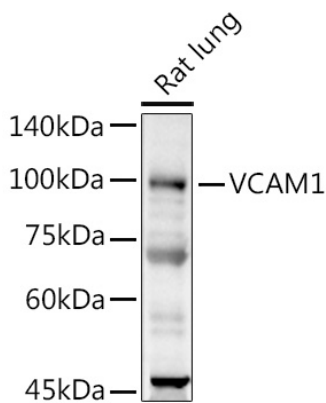
Secondary antibody: HRP Goat Anti-Rabbit IgG (H+L) (AS014) at 1:10000 dilution.

Lysates/proteins: 25ug per lane.

Blocking buffer: 3% nonfat dry milk in TBST.

Detection: ECL Basic Kit (RM00020).

Exposure time: 30s.



Western blot analysis of extracts of Rat lung, using VCAM1 antibody (A0279) at 1:1000 dilution.

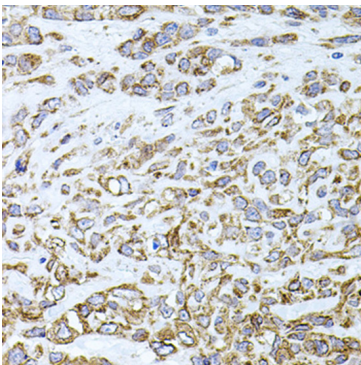
Secondary antibody: HRP Goat Anti-Rabbit IgG (H+L) (AS014) at 1:10000 dilution.

Lysates/proteins: 25ug per lane.

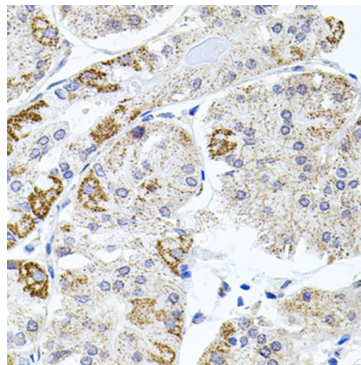
Blocking buffer: 3% nonfat dry milk in TBST.

Detection: ECL Basic Kit (RM00020).

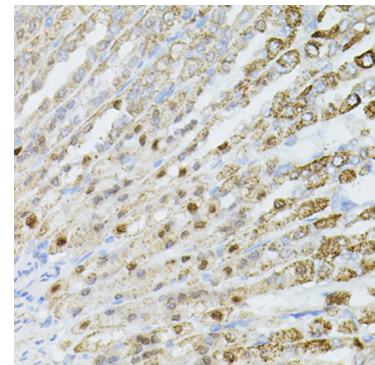
Exposure time: 180s.



Immunohistochemistry of paraffin-embedded Human lung cancer using VCAM1 antibody (A0279) at dilution of 1:100 (40x lens).



Immunohistochemistry of paraffin-embedded Human stomach using VCAM1 antibody (A0279) at dilution of 1:100 (40x lens).



Immunohistochemistry of paraffin-embedded Mouse stomach using VCAM1 antibody (A0279) at dilution of 1:100 (40x lens).