

SIRT2 Rabbit pAb

Catalog No.: A0273 **2 Publications**

Basic Information

Catalog No.

A0273

Observed MW

38-44kDa

Calculated MW

30kDa/35kDa/39kDa/41kDa/43kDa

Category

Primary antibody

Applications

WB, IHC, IF

Cross-Reactivity

Human, Mouse, Rat

Recommended Dilutions

WB	1:500 - 1:2000
IHC	1:50 - 1:200
IF	1:10 - 1:100

Contact

 | www.abclonal.com

Background

This gene encodes a member of the sirtuin family of proteins, homologs to the yeast Sir2 protein. Members of the sirtuin family are characterized by a sirtuin core domain and grouped into four classes. The functions of human sirtuins have not yet been determined; however, yeast sirtuin proteins are known to regulate epigenetic gene silencing and suppress recombination of rDNA. Studies suggest that the human sirtuins may function as intracellular regulatory proteins with mono-ADP-ribosyltransferase activity. The protein encoded by this gene is included in class I of the sirtuin family. Several transcript variants are resulted from alternative splicing of this gene.

Immunogen Information

Gene ID	Swiss Prot
22933	Q8IXJ6

Immunogen

Recombinant fusion protein containing a sequence corresponding to amino acids 288-389 of human SIRT2 (NP_036369.2).

Synonyms

SIRT2;SIR2;SIR2L;SIR2L2;sirtuin 2

Product Information

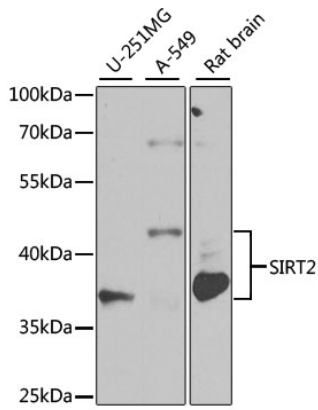
Source	Isotype	Purification
Rabbit	IgG	Affinity purification

Storage

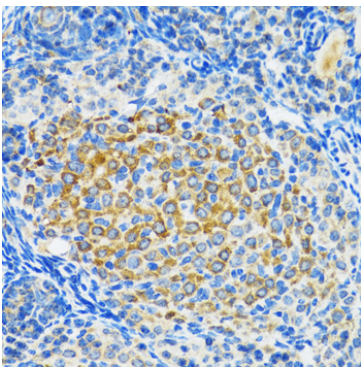
Store at -20°C. Avoid freeze / thaw cycles.

Buffer: PBS with 0.02% sodium azide,50% glycerol,pH7.3.

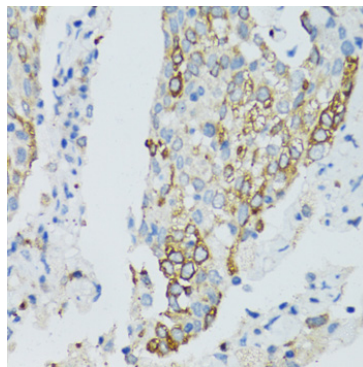
Validation Data



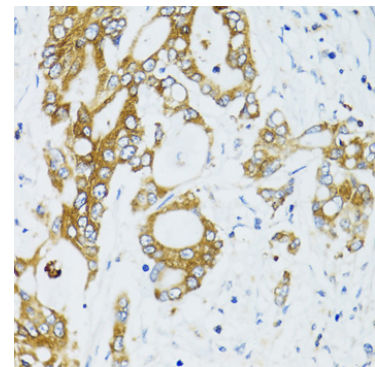
Western blot analysis of extracts of various cell lines, using SIRT2 antibody (A0273) at 1:1000 dilution. Secondary antibody: HRP Goat Anti-Rabbit IgG (H+L) (AS014) at 1:10000 dilution. Lysates/proteins: 25ug per lane. Blocking buffer: 3% nonfat dry milk in TBST. Detection: ECL Basic Kit (RM00020). Exposure time: 10s.



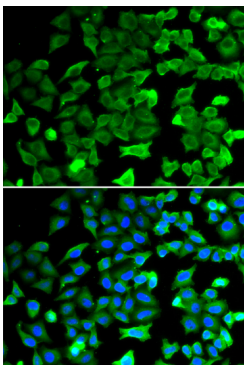
Immunohistochemistry of paraffin-embedded rat ovary using SIRT2 antibody (A0273) at dilution of 1:100 (40x lens).



Immunohistochemistry of paraffin-embedded human lung cancer using SIRT2 antibody (A0273) at dilution of 1:100 (40x lens).



Immunohistochemistry of paraffin-embedded human colon carcinoma using SIRT2 antibody (A0273) at dilution of 1:100 (40x lens).



Immunofluorescence analysis of HeLa cells using SIRT2 antibody (A0273). Blue: DAPI for nuclear staining.