

POLR1C Rabbit pAb

Catalog No.: A0269

Basic Information

Catalog No.

A0269

Observed MW

39kDa

Calculated MW

38kDa/39kDa

Category

Primary antibody

Applications

WB, IHC, IF

Cross-Reactivity

Human

Recommended Dilutions

WB	1:500 - 1:2000
IHC	1:50 - 1:200
IF	1:50 - 1:200

Contact

 | www.abclonal.com

Background

The protein encoded by this gene is a subunit of both RNA polymerase I and RNA polymerase III complexes. The encoded protein is part of the Pol core element. Mutations in this gene have been associated with Treacher Collins syndrome (TCS) and hypomyelinating leukodystrophy 11. Alternative splicing results in multiple transcript variants.

Immunogen Information

Gene ID	Swiss Prot
9533	O15160

Immunogen

Recombinant fusion protein containing a sequence corresponding to amino acids 1-200 of human POLR1C (NP_976035.1).

Synonyms

POLR1C;AC40;HLD11;RPA39;RPA40;RPA5;RPAC1;RPC40;TCS3

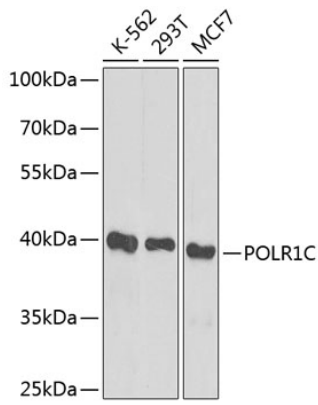
Product Information

Source	Isotype	Purification
Rabbit	IgG	Affinity purification

Storage

Store at -20°C. Avoid freeze / thaw cycles.
Buffer: PBS with 0.02% sodium azide,50% glycerol,pH7.3.

Validation Data



Western blot analysis of extracts of various cell lines, using POLR1C antibody (A0269) at 1:1000 dilution.

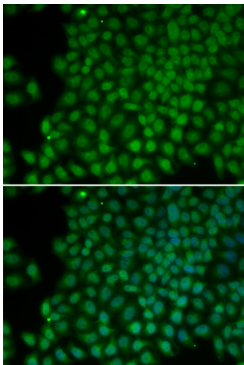
Secondary antibody: HRP Goat Anti-Rabbit IgG (H+L) (AS014) at 1:10000 dilution.

Lysates/proteins: 25ug per lane.

Blocking buffer: 3% nonfat dry milk in TBST.

Detection: ECL Basic Kit (RM00020).

Exposure time: 90s.



Immunofluorescence analysis of HeLa cells using POLR1C antibody (A0269). Blue: DAPI for nuclear staining.