

NME1/NM23A Rabbit pAb

Catalog No.: A0259 **1 Publications**

Basic Information

Catalog No.

A0259

Observed MW

21kDa

Calculated MW

17kDa/19kDa/30kDa

Category

Primary antibody

Applications

WB, IHC, IF

Cross-Reactivity

Human, Mouse, Rat

Recommended Dilutions

WB	1:500 - 1:2000
IHC	1:50 - 1:200
IF	1:50 - 1:200

Contact

 | www.abclonal.com

Background

This gene (NME1) was identified because of its reduced mRNA transcript levels in highly metastatic cells. Nucleoside diphosphate kinase (NDK) exists as a hexamer composed of 'A' (encoded by this gene) and 'B' (encoded by NME2) isoforms. Mutations in this gene have been identified in aggressive neuroblastomas. Two transcript variants encoding different isoforms have been found for this gene. Co-transcription of this gene and the neighboring downstream gene (NME2) generates naturally-occurring transcripts (NME1-NME2), which encodes a fusion protein comprised of sequence sharing identity with each individual gene product.

Immunogen Information

Gene ID	Swiss Prot
4830	P15531

Immunogen

A synthetic peptide corresponding to a sequence within amino acids 90 to the C-terminus of human NME1/NM23A/NM23A (NP_000260.1).

Synonyms

NME1;AWD;GAAD;NB;NBS;NDKA;NDPK-A;NDPKA;NM23;NM23-H1

Product Information

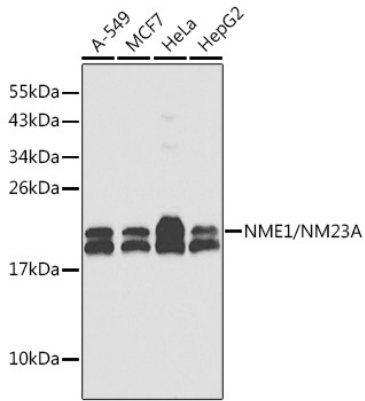
Source	Isotype	Purification
Rabbit	IgG	Affinity purification

Storage

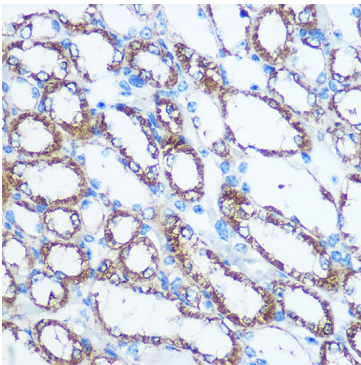
Store at -20°C. Avoid freeze / thaw cycles.

Buffer: PBS with 0.02% sodium azide,50% glycerol,pH7.3.

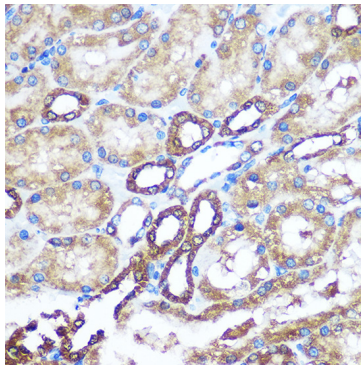
Validation Data



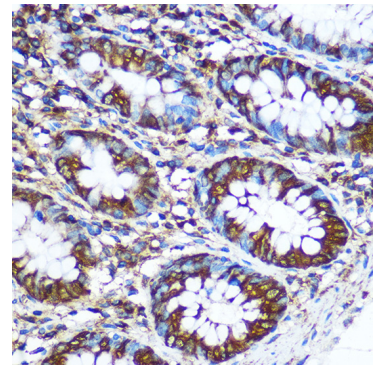
Western blot analysis of extracts of various cell lines, using NME1/NM23A/NM23A antibody (A0259). Secondary antibody: HRP Goat Anti-Rabbit IgG (H+L) (AS014) at 1:10000 dilution. Lysates/proteins: 25ug per lane. Blocking buffer: 3% nonfat dry milk in TBST.



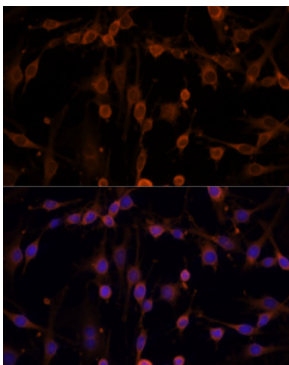
Immunohistochemistry of paraffin-embedded Mouse kidney using NME1/NM23A/NM23A Rabbit pAb (A0259) at dilution of 1:100 (40x lens).



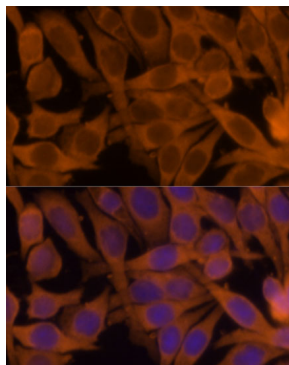
Immunohistochemistry of paraffin-embedded Rat kidney using NME1/NM23A/NM23A Rabbit pAb (A0259) at dilution of 1:100 (40x lens).



Immunohistochemistry of paraffin-embedded Human colon using NME1/NM23A/NM23A Rabbit pAb (A0259) at dilution of 1:100 (40x lens).



Immunofluorescence analysis of C6 cells using NME1/NM23A/NM23A antibody (A0259) at dilution of 1:100. Blue: DAPI for nuclear staining.



Immunofluorescence analysis of HeLa cells using NME1/NM23A/NM23A antibody (A0259) at dilution of 1:100. Blue: DAPI for nuclear staining.