

Neurofilament L Rabbit pAb

Catalog No.: A0257 **2 Publications**

Basic Information

Catalog No.

A0257

Observed MW

70KDa

Calculated MW

61kDa

Category

Primary antibody

Applications

WB, IHC, IF


Cross-Reactivity

Human, Mouse, Rat

Recommended Dilutions

WB	1:500 - 1:2000
IHC	1:50 - 1:200
IF	1:50 - 1:200

Contact

 | www.abclonal.com

Background

Neurofilaments are type IV intermediate filament heteropolymers composed of light, medium, and heavy chains. Neurofilaments comprise the axoskeleton and they functionally maintain the neuronal caliber. They may also play a role in intracellular transport to axons and dendrites. This gene encodes the light chain neurofilament protein. Mutations in this gene cause Charcot-Marie-Tooth disease types 1F (CMT1F) and 2E (CMT2E), disorders of the peripheral nervous system that are characterized by distinct neuropathies. A pseudogene has been identified on chromosome Y.

Immunogen Information

Gene ID	Swiss Prot
4747	P07196

Immunogen

Recombinant fusion protein containing a sequence corresponding to amino acids 400-543 of human Neurofilament L (NP_006149.2).

Synonyms

NEFL;CMT1F;CMT2E;NF-L;NF68;NFL;PPP1R110

Product Information

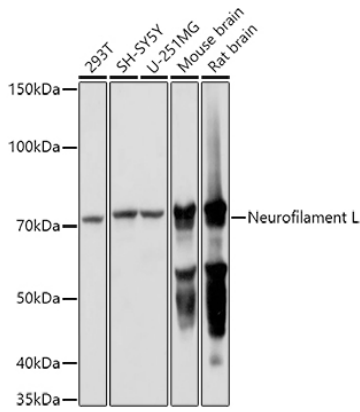
Source	Isotype	Purification
Rabbit	IgG	Affinity purification

Storage

Store at -20°C. Avoid freeze / thaw cycles.

Buffer: PBS with 0.02% sodium azide,50% glycerol,pH7.3.

Validation Data



Western blot analysis of extracts of various cell lines, using Neurofilament L antibody (A0257) at 1:1000 dilution.

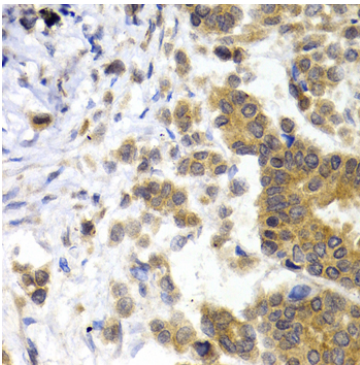
Secondary antibody: HRP Goat Anti-Rabbit IgG (H+L) (AS014) at 1:10000 dilution.

Lysates/proteins: 25ug per lane.

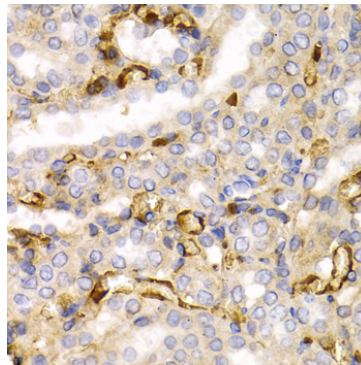
Blocking buffer: 3% nonfat dry milk in TBST.

Detection: ECL Basic Kit (RM00020).

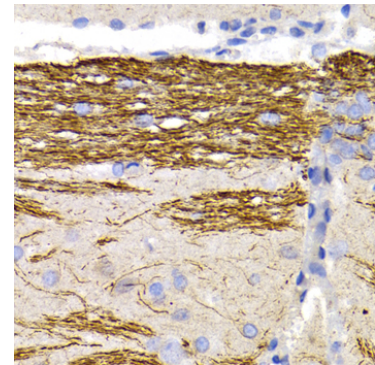
Exposure time: 1s.



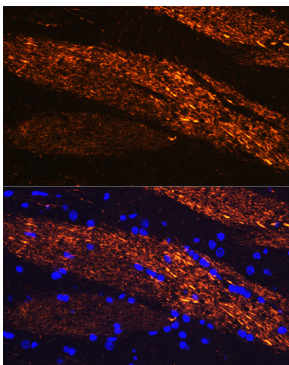
Immunohistochemistry of paraffin-embedded human breast cancer using Neurofilament L antibody (A0257) at dilution of 1:200 (40x lens).



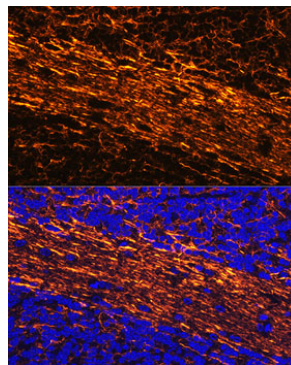
Immunohistochemistry of paraffin-embedded rat kidney using Neurofilament L antibody (A0257) at dilution of 1:200 (40x lens).



Immunohistochemistry of paraffin-embedded rat brain using Neurofilament L antibody (A0257) at dilution of 1:200 (40x lens).



Immunofluorescence analysis of rat brain using Neurofilament L Rabbit pAb (A0257) at dilution of 1:100 (40x lens). Blue: DAPI for nuclear staining.



Immunofluorescence analysis of mouse brain using Neurofilament L Rabbit pAb (A0257) at dilution of 1:100 (40x lens). Blue: DAPI for nuclear staining.