

MEK2 Rabbit pAb

Catalog No.: A0253

Basic Information

Catalog No.

A0253

Observed MW

53kDa

Calculated MW

44kDa

Category

Primary antibody

Applications

WB, IHC

Cross-Reactivity

Human, Mouse

Recommended Dilutions

WB	1:500 - 1:2000
IHC	1:50 - 1:200

Contact

 | www.abclonal.com

Background

The protein encoded by this gene is a dual specificity protein kinase that belongs to the MAP kinase kinase family. This kinase is known to play a critical role in mitogen growth factor signal transduction. It phosphorylates and thus activates MAPK1/ERK2 and MAPK2/ERK3. The activation of this kinase itself is dependent on the Ser/Thr phosphorylation by MAP kinase kinase kinases. Mutations in this gene cause cardiofaciocutaneous syndrome (CFC syndrome), a disease characterized by heart defects, mental retardation, and distinctive facial features similar to those found in Noonan syndrome. The inhibition or degradation of this kinase is also found to be involved in the pathogenesis of Yersinia and anthrax. A pseudogene, which is located on chromosome 7, has been identified for this gene.

Immunogen Information

Gene ID	Swiss Prot
5605	P36507

Immunogen

A synthetic peptide corresponding to a sequence within amino acids 1-100 of human MEK2 (NP_109587.1).

Synonyms

CFC4;MAPKK2;MEK2;MKK2;PRKMK2;MAP2K2

Product Information

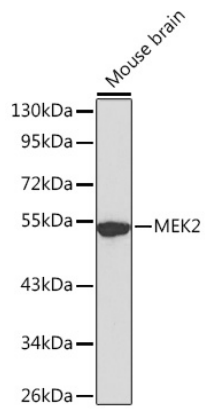
Source	Isotype	Purification
Rabbit	IgG	Affinity purification

Storage

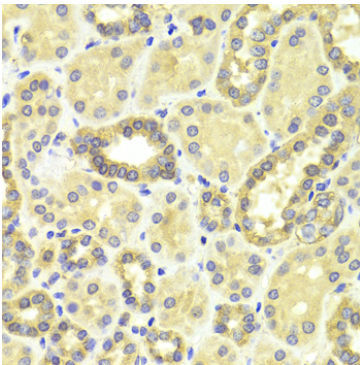
Store at -20°C. Avoid freeze / thaw cycles.

Buffer: PBS with 0.02% sodium azide, 50% glycerol, pH7.3.

Validation Data



Western blot analysis of extracts of mouse brain, using MEK2 antibody (A0253).
Secondary antibody: HRP Goat Anti-Rabbit IgG (H+L) (AS014) at 1:10000 dilution.
Lysates/proteins: 25ug per lane.
Blocking buffer: 3% nonfat dry milk in TBST.



Immunohistochemistry of paraffin-embedded human kidney using MEK2 antibody (A0253) at dilution of 1:100 (40x lens).