

MCL1 Rabbit pAb

Catalog No.: A0250 **2 Publications**

Basic Information

Catalog No.

A0250

Observed MW

37kDa

Calculated MW

28kDa/37kDa

Category

Primary antibody

Applications

WB, IHC, IF

Cross-Reactivity

Human, Mouse

Recommended Dilutions

WB	1:500 - 1:2000
IHC	1:100 - 1:200
IF	1:50 - 1:200

Contact

 | www.abclonal.com

Background

This gene encodes an anti-apoptotic protein, which is a member of the Bcl-2 family. Alternative splicing results in multiple transcript variants. The longest gene product (isoform 1) enhances cell survival by inhibiting apoptosis while the alternatively spliced shorter gene products (isoform 2 and isoform 3) promote apoptosis and are death-inducing.

Immunogen Information

Gene ID	Swiss Prot
4170	Q07820

Immunogen

A synthetic peptide corresponding to a sequence within amino acids 120-220 of human MCL1 (NP_068779.1).

Synonyms

MCL1;BCL2L3;EAT;MCL1-ES;MCL1L;MCL1S;Mcl-1;TM;bcl2-L-3;mcl1/EAT;MCL1

Product Information

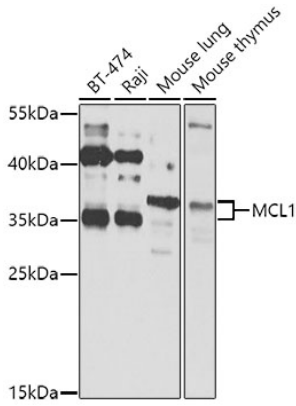
Source	Isotype	Purification
Rabbit	IgG	Affinity purification

Storage

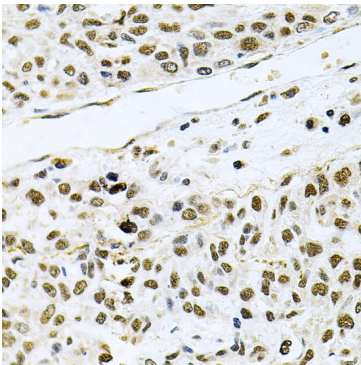
Store at -20°C. Avoid freeze / thaw cycles.

Buffer: PBS with 0.02% sodium azide,50% glycerol,pH7.3.

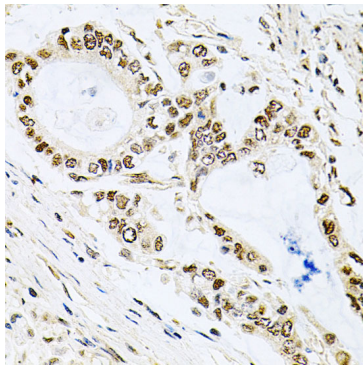
Validation Data



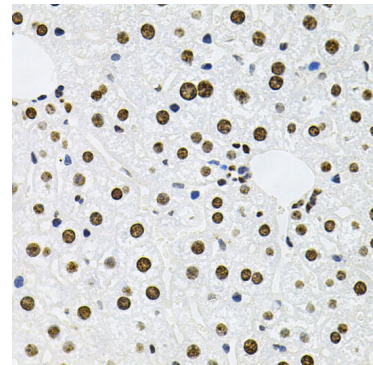
Western blot analysis of extracts of various cell lines, using MCL1 antibody (A0250) at 1:1000 dilution. Secondary antibody: HRP Goat Anti-Rabbit IgG (H+L) (AS014) at 1:10000 dilution. Lysates/proteins: 25ug per lane. Blocking buffer: 3% nonfat dry milk in TBST. Detection: ECL Basic Kit (RM00020). Exposure time: 30s.



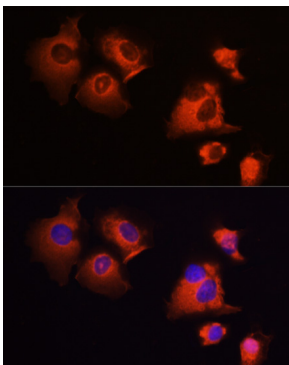
Immunohistochemistry of paraffin-embedded human lung cancer using MCL1 antibody (A0250) at dilution of 1:100 (40x lens).



Immunohistochemistry of paraffin-embedded human gastric cancer using MCL1 antibody (A0250) at dilution of 1:100 (40x lens).



Immunohistochemistry of paraffin-embedded mouse liver using MCL1 antibody (A0250) at dilution of 1:100 (40x lens).



Immunofluorescence analysis of A431 cells using MCL1 antibody (A0250) at dilution of 1:100 (40x lens). Blue: DAPI for nuclear staining.