

[KO Validated] Lamin A/C Rabbit pAb

Catalog No.: A0249 **KO Validated** **21 Publications**

Basic Information

Catalog No.

A0249

Observed MW

63KDa

Calculated MW

62-74kDa

Category

Primary antibody

Applications

WB, IHC, IF, IP

Cross-Reactivity

Human, Mouse, Rat

Recommended Dilutions

WB	1:500 - 1:2000
IHC	1:50 - 1:200
IF	1:50 - 1:200
IP	1:50 - 1:200

Contact

 | www.abclonal.com

Background

The nuclear lamina consists of a two-dimensional matrix of proteins located next to the inner nuclear membrane. The lamin family of proteins make up the matrix and are highly conserved in evolution. During mitosis, the lamina matrix is reversibly disassembled as the lamin proteins are phosphorylated. Lamin proteins are thought to be involved in nuclear stability, chromatin structure and gene expression. Vertebrate lamins consist of two types, A and B. Alternative splicing results in multiple transcript variants. Mutations in this gene lead to several diseases: Emery-Dreifuss muscular dystrophy, familial partial lipodystrophy, limb girdle muscular dystrophy, dilated cardiomyopathy, Charcot-Marie-Tooth disease, and Hutchinson-Gilford progeria syndrome.

Immunogen Information

Gene ID	Swiss Prot
4000	P02545

Immunogen

Recombinant fusion protein containing a sequence corresponding to amino acids 403-572 of human Lamin C (NP_005563.1).

Synonyms

LMNA;CDCD1;CDDC;CMD1A;CMT2B1;EMD2;FPL;FPLD;FPLD2;HGPS;IDC;LDP1;LFP;LGMD1B;LMN1;LMNC;LMNL1;MADA;PRO1;lamin;Lamin A/C

Product Information

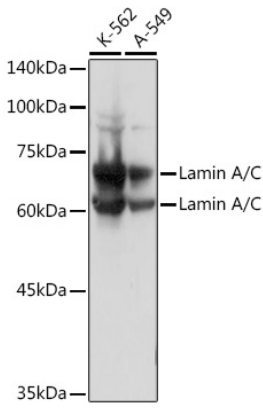
Source	Isotype	Purification
Rabbit	IgG	Affinity purification

Storage

Store at -20°C. Avoid freeze / thaw cycles.

Buffer: PBS with 0.02% sodium azide, 50% glycerol, pH7.3.

Validation Data



Western blot analysis of extracts of various cell lines, using Lamin A/C Rabbit pAb (A0249) at 1:3000 dilution.

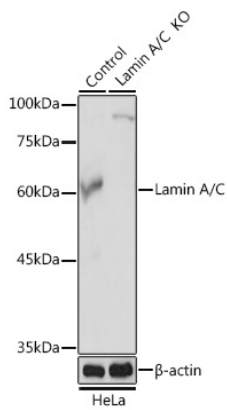
Secondary antibody: HRP Goat Anti-Rabbit IgG (H+L) (AS014) at 1:10000 dilution.

Lysates/proteins: 25ug per lane.

Blocking buffer: 3% nonfat dry milk in TBST.

Detection: ECL Basic Kit (RM00020).

Exposure time: 1s.



Western blot analysis of extracts from normal (control) and Lamin A/C Rabbit pAb knockout (KO) HeLa cells, using Lamin A/C Rabbit pAb antibody (A0249) at 1:3000 dilution.

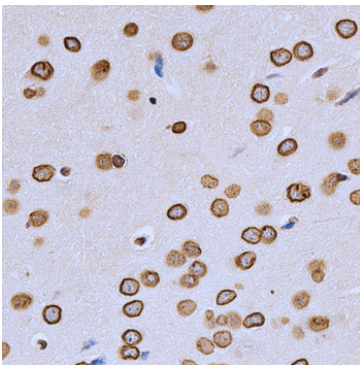
Secondary antibody: HRP Goat Anti-Rabbit IgG (H+L) (AS014) at 1:10000 dilution.

Lysates/proteins: 25ug per lane.

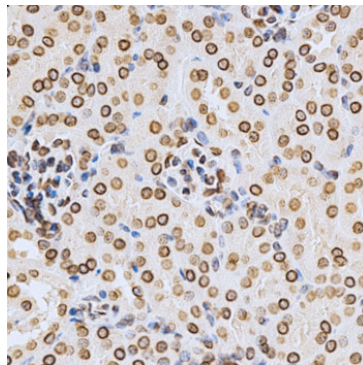
Blocking buffer: 3% nonfat dry milk in TBST.

Detection: ECL Basic Kit (RM00020).

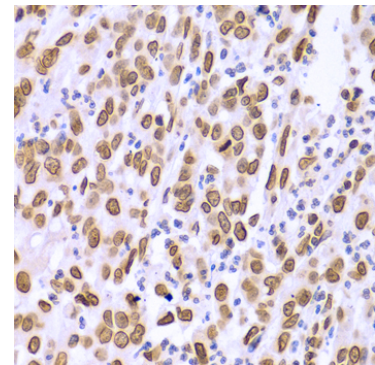
Exposure time: 1s.



Immunohistochemistry of paraffin-embedded rat brain using Lamin A/C antibody (A0249) at dilution of 1:200 (40x lens).

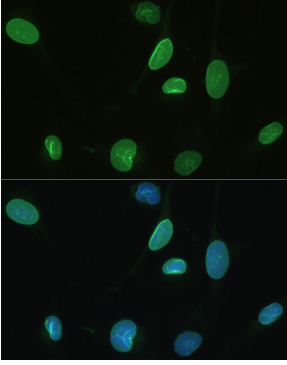


Immunohistochemistry of paraffin-embedded mouse kidney using Lamin A/C antibody (A0249) at dilution of 1:200 (40x lens).

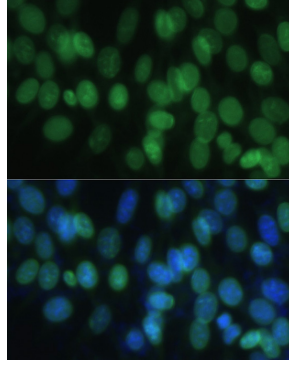


Immunohistochemistry of paraffin-embedded Human gastric cancer using Lamin A/C antibody (A0249) at dilution of 1:100 (40x lens).

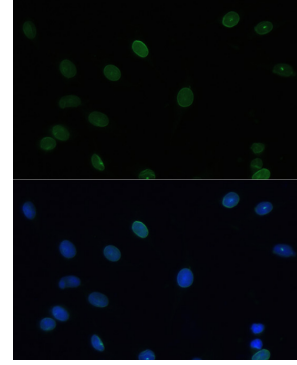
Validation Data



Immunofluorescence analysis of U2OS using Lamin A/C antibody (A0249) at dilution of 1:100. Blue: DAPI for nuclear staining.



Immunofluorescence analysis of NIH/3T3 using Lamin A/C antibody (A0249) at dilution of 1:100. Blue: DAPI for nuclear staining.



Immunofluorescence analysis of C6 using Lamin A/C antibody (A0249) at dilution of 1:100. Blue: DAPI for nuclear staining.