

IRS1 Rabbit pAb

Catalog No.: A0245 **4 Publications**

Basic Information

Catalog No.

A0245

Observed MW

160KDa

Calculated MW

131kDa

Category

Primary antibody

Applications

WB, IHC, IF

Cross-Reactivity

Human, Mouse, Rat

Background

This gene encodes a protein which is phosphorylated by insulin receptor tyrosine kinase. Mutations in this gene are associated with type II diabetes and susceptibility to insulin resistance.

Recommended Dilutions

WB	1:500 - 1:1000
IHC	1:50 - 1:100
IF	1:50 - 1:100

Immunogen Information

Gene ID

3667

Swiss Prot

P35568


Immunogen

Recombinant protein of human IRS1

Synonyms

HIRS-1;IRS1

Contact

 | www.abclonal.com

Product Information

Source

Rabbit

Isotype

IgG

Purification

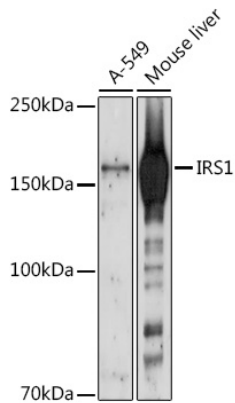
Affinity purification

Storage

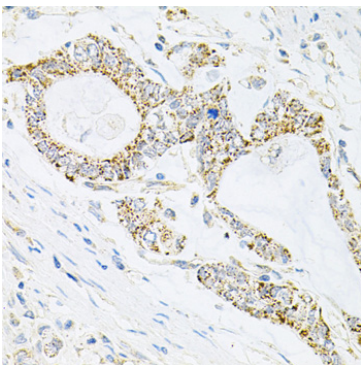
Store at -20°C. Avoid freeze / thaw cycles.

Buffer: PBS with 0.02% sodium azide, 50% glycerol, pH7.3.

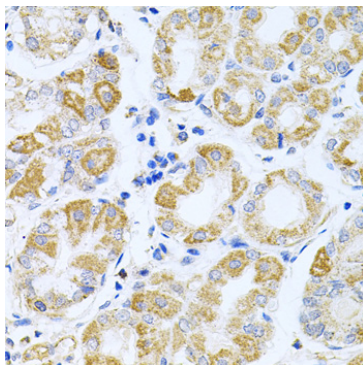
Validation Data



Western blot analysis of extracts of various cell lines, using IRS1 antibody (A0245) at 1:1000 dilution. Secondary antibody: HRP Goat Anti-Rabbit IgG (H+L) (AS014) at 1:10000 dilution. Lysates/proteins: 25ug per lane. Blocking buffer: 3% nonfat dry milk in TBST. Detection: ECL Basic Kit (RM00020). Exposure time: 60s.



Immunohistochemistry of paraffin-embedded human gastric cancer using IRS1 antibody (A0245) at dilution of 1:100 (40x lens).



Immunohistochemistry of paraffin-embedded human stomach using IRS1 antibody (A0245) at dilution of 1:100 (40x lens).